



## CONTENTS

Product introduction	Intro
Series variation	2
<hr/>	
● Specifications/How to order/Dimensions	
• EJSG-04-*	6
• EJSG-05-*	16
• EJSG-08-*	26
● Model selection	108
● Technical data	110
<hr/>	
⚠ Safety precautions	132
Model Selection Check Sheet	140



## Model No. configuration

### Slider

**EJSG - 05 E 10 0100 N B N - C S03**

<b>1</b> Body size	<b>3</b> Screw lead	<b>6</b> Encoder	<b>7</b> Relay cable
04 Body width 44mm	05 5 mm	B Battery-less absolute Encoder	N00 None
05 Body width 54mm	06 6 mm	C Incremental encoder	S01 Fixed cable 1 m
08 Body width 82mm	10 10 mm		S03 Fixed cable 3 m
	12 12 mm		S05 Fixed cable 5 m
	20 20 mm		S10 Fixed cable 10 m
<b>2</b> Motor mounting direction	<b>4</b> Stroke	<b>5</b> Brake	R01 Movable cable 1 m
E Straight mounting	0050 50 mm	N None	R03 Movable cable 3 m
R Right mounting	to (In 50 mm increments)	B Yes	R05 Movable cable 5 m
D Bottom mounting	1100 1100 mm		R10 Movable cable 10 m
L Left mounting			

### Dust-proof specifications (G Series)

**EJSG - 05 E 10 0100 N B N - V C S03 - G**

<b>8</b> Fitting	Dust-proof
V Yes	

### Low dust specification (C Series)

**EJSG - 05 E 10 0100 N B N - V C S03 - C**

<b>8</b> Fitting	Low dust specification
V Yes	

### Compatible with rechargeable battery manufacturing processes (P4 Series)

**EJSG - 05 E 10 0100 N B N - V C S03 - P4**

<b>8</b> Fitting	Compatible with rechargeable battery manufacturing processes
Blank None	
V Yes	

### Compatible with food manufacturing processes (FP1 Series)

**EJSG - 05 E 10 0100 N B N - C S03 - FP1**

Applicable controller	Supports food manufacturing processes
ECG Series	

Notes

EJSG

EJSG-G

EJSG-C

EJSG-P4

EJSG-FP1

Model selection

ECG-A

Safety  
precautions



# Electric actuator Slider EJSJG-04E

Straight motor mounting

35 stepper motor



## How to order

**EJSJG - 04 E 06 0300 N B N - C S03**

① Body size  
04 Body width 44mm

② Motor mounting direction  
E Straight mounting

③ Screw lead  
06 6 mm  
12 12 mm

④ Stroke  
0050 to 0800 50 mm (In 50 mm increments) 800 mm

⑤ Brake \*2  
N None  
B Yes

⑥ Encoder \*1  
B Battery-less absolute encoder  
C Incremental encoder

⑦ Relay cable \*3

N00	None
S01	Fixed cable 1 m
S03	Fixed cable 3 m
S05	Fixed cable 5 m
S10	Fixed cable 10 m
R01	Movable cable 1 m
R03	Movable cable 3 m
R05	Movable cable 5 m
R10	Movable cable 10 m

\*1 Select the controller from page 117.

\*2 When using vertically, select "Yes".

\*3 Refer to page 128 for relay cable dimensions.

EAR-compliant product (EAR99-embedded product)

## Specifications

Supported controllers	ECG-A	
Motor	<input type="checkbox"/> 35 Stepping motor	
Encoder type	Battery-less absolute encoder Incremental encoder	
Drive method	Ball screw ø10	
Stroke mm	50 to 800	
Screw lead mm	6	12
Max. workload kg *1	Horizontal	20.0
	Vertical	9.2
Operation speed range *2 mm/s	7 to 320	15 to 500
Max. acceleration/ deceleration G	Horizontal	0.7
	Vertical	0.3
Maximum pushing force N	155	77
Pressing operation speed rangemm/s	5 to 20	5 to 20
Repeatability mm	±0.01	
Lost motion mm	0.1 or less	
Static allowable moment N·m	MP:62 MY:62 MR:92	
Motor power supply voltage	24 VDC ±10%	
Motor section max. instantaneous current A	2.4	
Brake	Model, power supply voltage	Non-excitation operation, 24 VDC ±10%
	Power consumption W	6.1
	Holding force N	140
Insulation resistance	10 MΩ, 500 VDC	
Withstand voltage	500 VAC for 1 minute	
Operating ambient temperature, humidity	10 to 40 °C (no freezing) 35 to 80% RH (no condensation)	
Storage ambient temperature, humidity	-10 to 50°C (no freezing) 35 to 80% RH (no condensation)	
Atmosphere	No corrosive gas, explosive gas, or dust	

\*1 Load capacity varies according to acceleration/deceleration and speed. Refer to page 7 for details.

\*2 The maximum speed may decrease depending on the conditions.

### Stroke and max. speed

Screw lead	Stroke (mm/s)					
	50 to 550	600	650	700	750	800
6	320	290	250	220	190	170
12	500	500	500	440	390	340

### Speed and load capacity

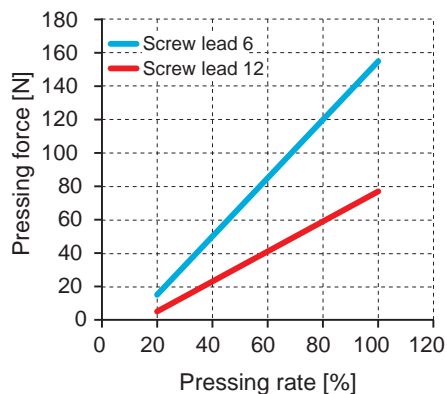
[When installed horizontally]

Speed (mm/s)	Acceleration/deceleration (G)			
	0.3		0.7	
	Screw lead (mm)			
	6	12	6	12
7	20.0		20.0	
15	20.0	15.0	20.0	15.0
50	20.0	15.0	20.0	15.0
100	20.0	15.0	20.0	15.0
150	20.0	15.0	12.5	10.8
200	15.0	15.0	12.5	10.8
250	11.7	10.8	11.7	8.3
300	7.5	10.8	7.5	8.3
320	7.5	4.2	7.5	4.2
400		4.2		4.2
500		2.5		2.5

[When installed vertically]

Speed (mm/s)	Acceleration/deceleration (G)	
	0.3	
	Screw lead (mm)	
	6	12
7	9.2	
15	9.2	3.3
50	9.2	3.3
100	9.2	3.3
150	6.7	3.3
200	4.2	3.3
225	1.7	2.5
250	1.7	2.5
275	0.4	2.5
300		2.5
350		0.8
400		0.8
450		0.4

### Pressing force

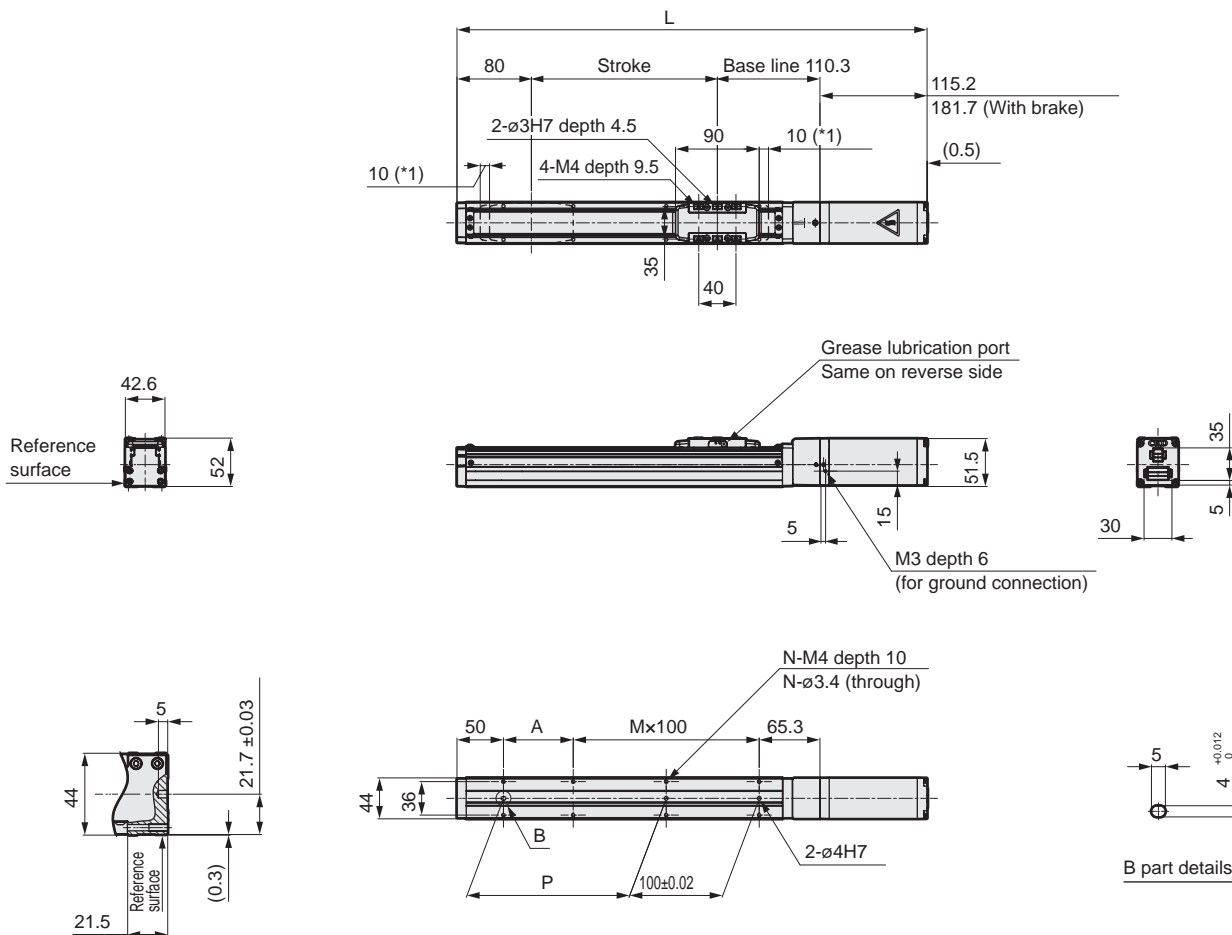


\*The above pressing force is a reference value. Variation may occur according to conditions such as pressing speed.

# EJSG-04E

## Dimensions Straight motor mounting

### ● EJSG-04E



Note 1: Operating range to the mechanical stopper

Stroke code		0050	0100	0150	0200	0250	0300	0350	0400	0450	0500	0550	0600	0650	0700	0750	0800
Stroke (mm)		50	100	150	200	250	300	350	400	450	500	550	600	650	700	750	800
L	Without brake	355.5	405.5	455.5	505.5	555.5	605.5	655.5	705.5	755.5	805.5	855.5	905.5	955.5	1005.5	1055.5	1105.5
	With brake	422	472	522	572	622	672	722	772	822	872	922	972	1022	1072	1122	1172
A		25	75	25	75	25	75	25	75	25	75	25	75	25	75	25	75
M		1	1	2	2	3	3	4	4	5	5	6	6	7	7	8	8
N		6	6	8	8	10	10	12	12	14	14	16	16	18	18	20	20
P		25	75	125	175	225	275	325	375	425	475	525	575	625	675	725	775
Weight (kg)	Without brake	1.6	1.7	1.8	1.9	2.0	2.2	2.3	2.4	2.5	2.6	2.8	2.9	3.0	3.1	3.2	3.4
	With brake	2.0	2.1	2.2	2.3	2.5	2.6	2.7	2.8	2.9	3.1	3.2	3.3	3.4	3.5	3.7	3.8

Notes

EJSG

EJSG-G

EJSG-C

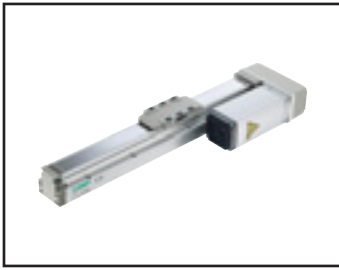
EJSG-P4

EJSG-FP1

Model selection

ECG-A

Safety  
precautions



# Electric actuator Slider EJSG-04\*

Motor side mounting (left, right, bottom)

35 Stepping motor



## How to order

**EJSG - 04 R 06 0300 N B N - C S03**

① Body size  
04 Body width 44mm

② Motor mounting direction\*1  
R Right mounting  
D Bottom mounting  
L Left mounting

③ Screw lead  
06 6 mm  
12 12 mm

④ Stroke\*2  
0050 to 0800  
50 mm (In 50 mm increments)  
800 mm

⑤ Brake\*3  
N None  
B Yes

⑥ Encoder  
B Battery-less absolute encoder  
C Incremental encoder

⑦ Relay cable\*3

N00	None
S01	Fixed cable 1 m
S03	Fixed cable 3 m
S05	Fixed cable 5 m
S10	Fixed cable 10 m
R01	Movable cable 1 m
R03	Movable cable 3 m
R05	Movable cable 5 m
R10	Movable cable 10 m

\*1 Select the controller from page 117.

\*2 When selecting the motor mounting direction "D", the stroke is "0250 (250 mm)" to "0800(800mm)" is the selection.

\*3 When using vertically, select "Yes".

\*4 Refer to page 128 for relay cable dimensions.

EAR-compliant product (EAR99-embedded product)

## Specifications

Supported controllers	ECG-A	
Motor	<input type="checkbox"/> 35 Stepping motor	
Encoder type	Battery-less absolute encoder Incremental encoder	
Drive method	Ball screw ø10	
Stroke	50 to 800	
Screw lead	6	12
Max. workload kg*1	Horizontal 20.0	11.7
	Vertical 9.2	3.3
Operation speed range*2	7 to 250	15 to 400
Max. acceleration/ deceleration G	Horizontal 0.7	0.7
	Vertical 0.3	0.3
Maximum pushing force	155	77
Pressing operation speed range	5 to 20	5 to 20
Repeatability	±0.01	
Lost motion	0.1 or less	
Static allowable moment	MP:62 MY:62 MR:92	
Motor power supply voltage	24 VDC ±10%	
Motor section max. instantaneous current	2.4	
Brake	Model, power supply voltage	Non-excitation operation, 24 VDC ±10%
	Power consumption	6.1
	Holding force	140
Insulation resistance	10 MΩ, 500 VDC	
Withstand voltage	500 VAC for 1 minute	
Operating ambient temperature, humidity	10 to 40 °C (no freezing) 35 to 80% RH (no condensation)	
Storage ambient temperature, humidity	-10 to 50°C (no freezing) 35 to 80% RH (no condensation)	
Atmosphere	No corrosive gas, explosive gas, or dust	

\*1 Load capacity varies according to acceleration/deceleration and speed. Refer to page 11 for details.

\*2 The maximum speed may decrease depending on the conditions.

### Stroke and max. speed

Screw lead	Stroke (mm/s)			
	50 to 650	700	750	800
6	250	220	190	170
12	400	400	390	340

### Speed and load capacity

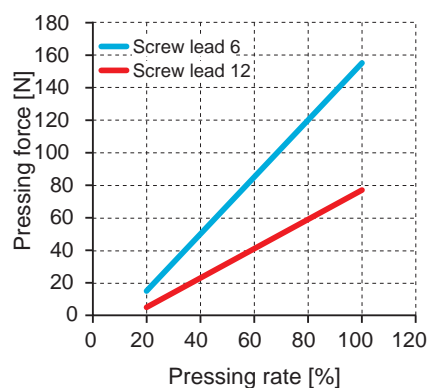
[When installed horizontally]

Speed (mm/s)	Acceleration/deceleration (G)			
	0.3		0.7	
	Screw lead (mm)			
	6	12	6	12
7	20.0		20.0	
15	20.0	11.7	20.0	10.0
50	20.0	11.7	20.0	10.0
100	20.0	11.7	20.0	10.0
150	13.3	11.7	11.7	10.0
200	13.3	11.7	10.0	10.0
250	10.0	8.3	8.3	8.3
300		8.3		8.3
400		3.3		3.3

[When installed vertically]

Speed (mm/s)	Acceleration/deceleration (G)	
	0.3	
	Screw lead (mm)	
	6	12
7	9.2	
15	9.2	3.3
50	9.2	3.3
100	6.7	3.3
150	3.3	3.3
200	2.5	3.3
225	0.8	1.7
300		1.7
350		0.8

### Pressing force

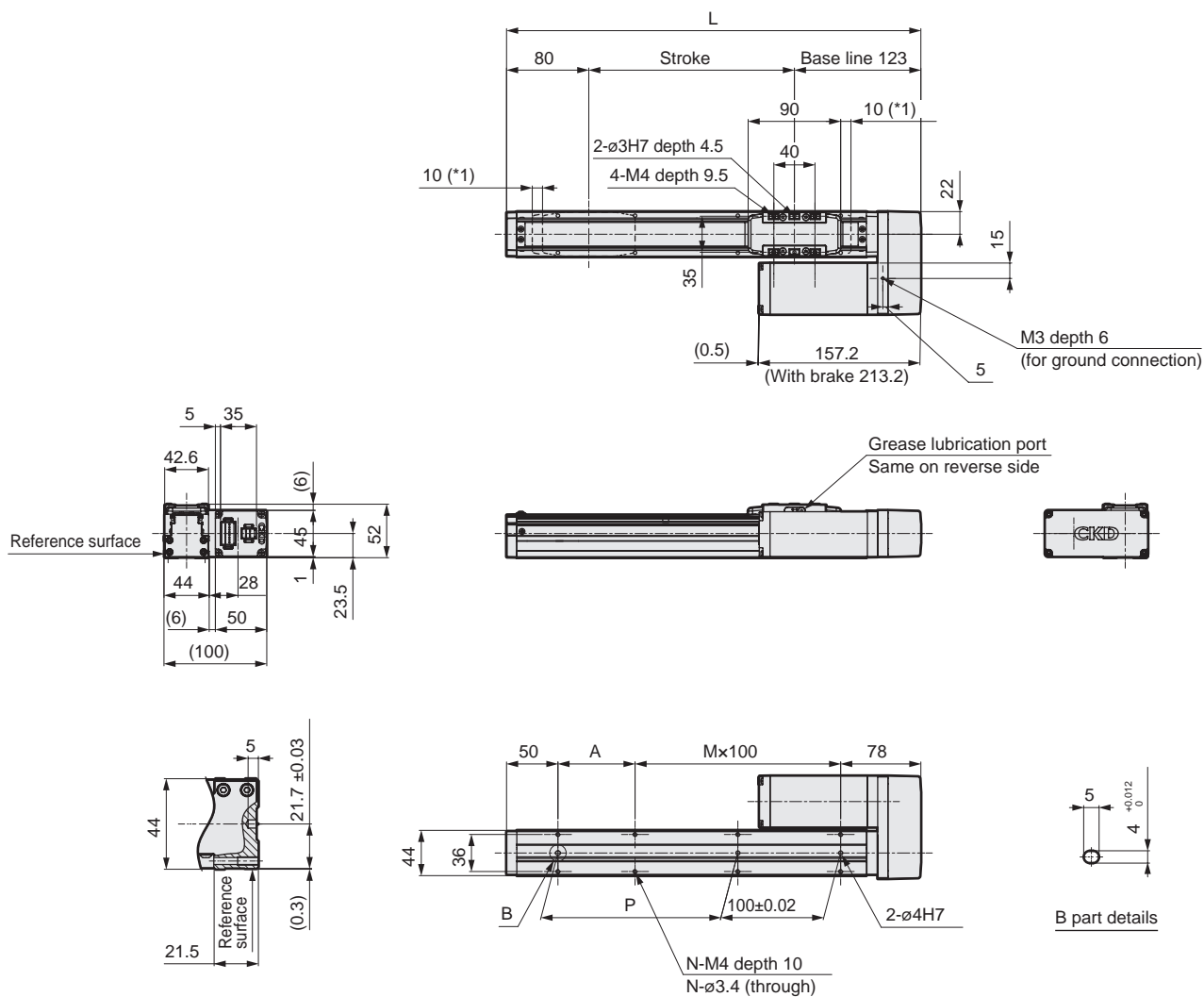


\*The above pressing force is a reference value. Variation may occur according to conditions such as pressing speed.

# EJSG-04\*

## Dimensions Right motor mounting

### ● EJSG-04R

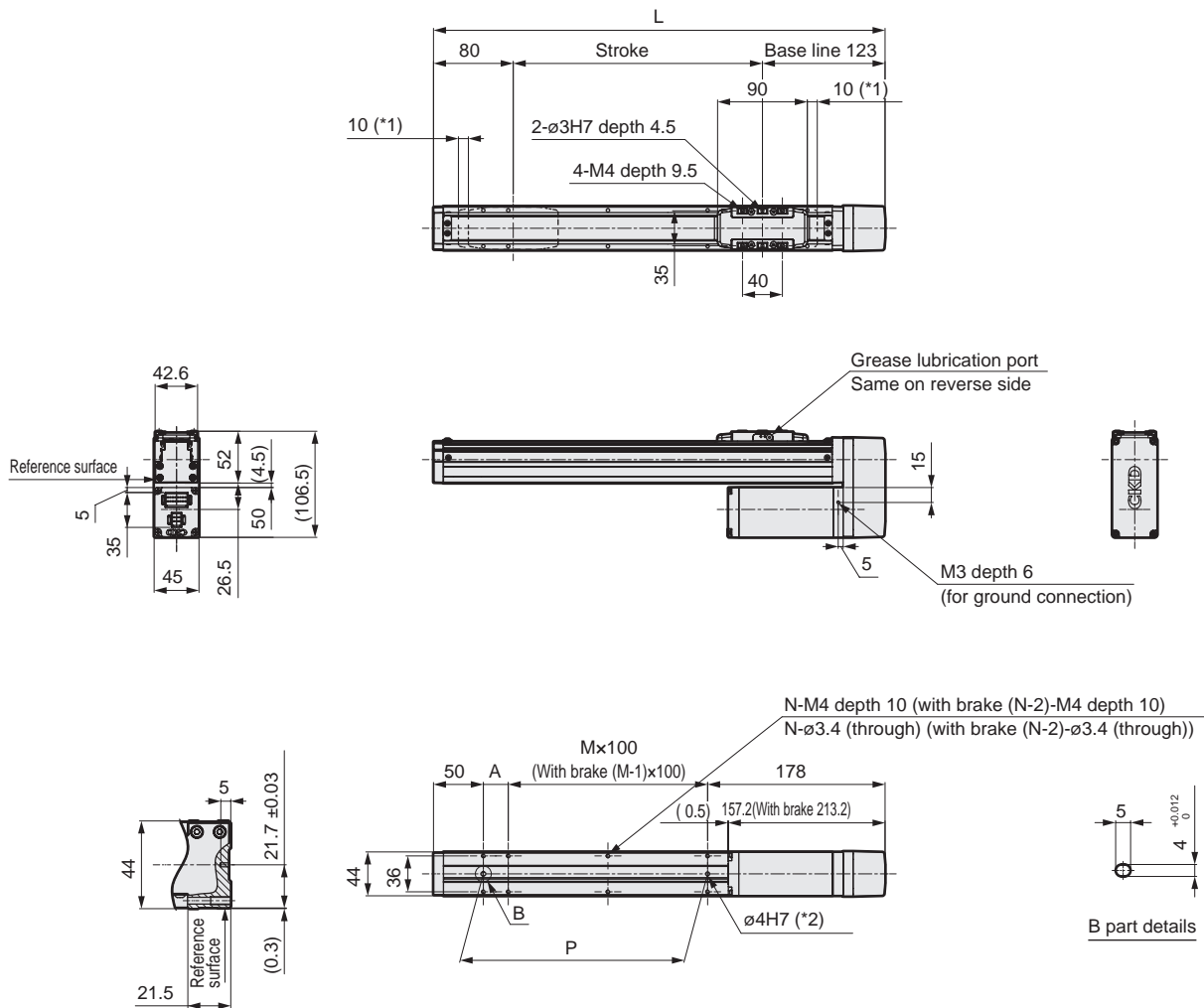


Note 1: Operating range to the mechanical stopper

Stroke code	0050	0100	0150	0200	0250	0300	0350	0400	0450	0500	0550	0600	0650	0700	0750	0800	
Stroke (mm)	50	100	150	200	250	300	350	400	450	500	550	600	650	700	750	800	
L	253	303	353	403	453	503	553	603	653	703	753	803	853	903	953	1003	
A	25	75	25	75	25	75	25	75	25	75	25	75	25	75	25	75	
M	1	1	2	2	3	3	4	4	5	5	6	6	7	7	8	8	
N	6	6	8	8	10	10	12	12	14	14	16	16	18	18	20	20	
P	25	75	125	175	225	275	325	375	425	475	525	575	625	675	725	775	
Weight (kg)	Without brake	1.7	1.8	1.9	2.0	2.2	2.3	2.4	2.5	2.6	2.8	2.9	3.0	3.1	3.2	3.4	3.5
	With brake	2.1	2.2	2.3	2.4	2.6	2.7	2.8	2.9	3.0	3.2	3.3	3.4	3.5	3.6	3.8	3.9

### Dimensions Bottom motor mounting

#### ● EJSG-04D



\*1: Operating range to the mechanical stopper

\*2: When the type with brake is selected, the  $\varnothing$ 4H7 cannot be used because it is hidden in the motor part.

Stroke code	0250	0300	0350	0400	0450	0500	0550	0600	0650	0700	0750	0800	
Stroke (mm)	250	300	350	400	450	500	550	600	650	700	750	800	
L	453	503	553	603	653	703	753	803	853	903	953	1003	
A	25	75	25	75	25	75	25	75	25	75	25	75	
M	2	2	3	3	4	4	6	6	7	7	8	8	
N	8	8	10	10	12	12	16	16	18	18	20	20	
P	225	275	325	375	425	475	525	575	625	675	725	775	
Weight (kg)	Without brake	2.2	2.3	2.4	2.5	2.6	2.8	2.9	3.0	3.1	3.2	3.4	3.5
	With brake	2.6	2.7	2.8	2.9	3.0	3.2	3.3	3.4	3.5	3.6	3.8	3.9

EJSG

EJSG-G

EJSG-C

EJSG-P4

EJSG-FP1

Model selection

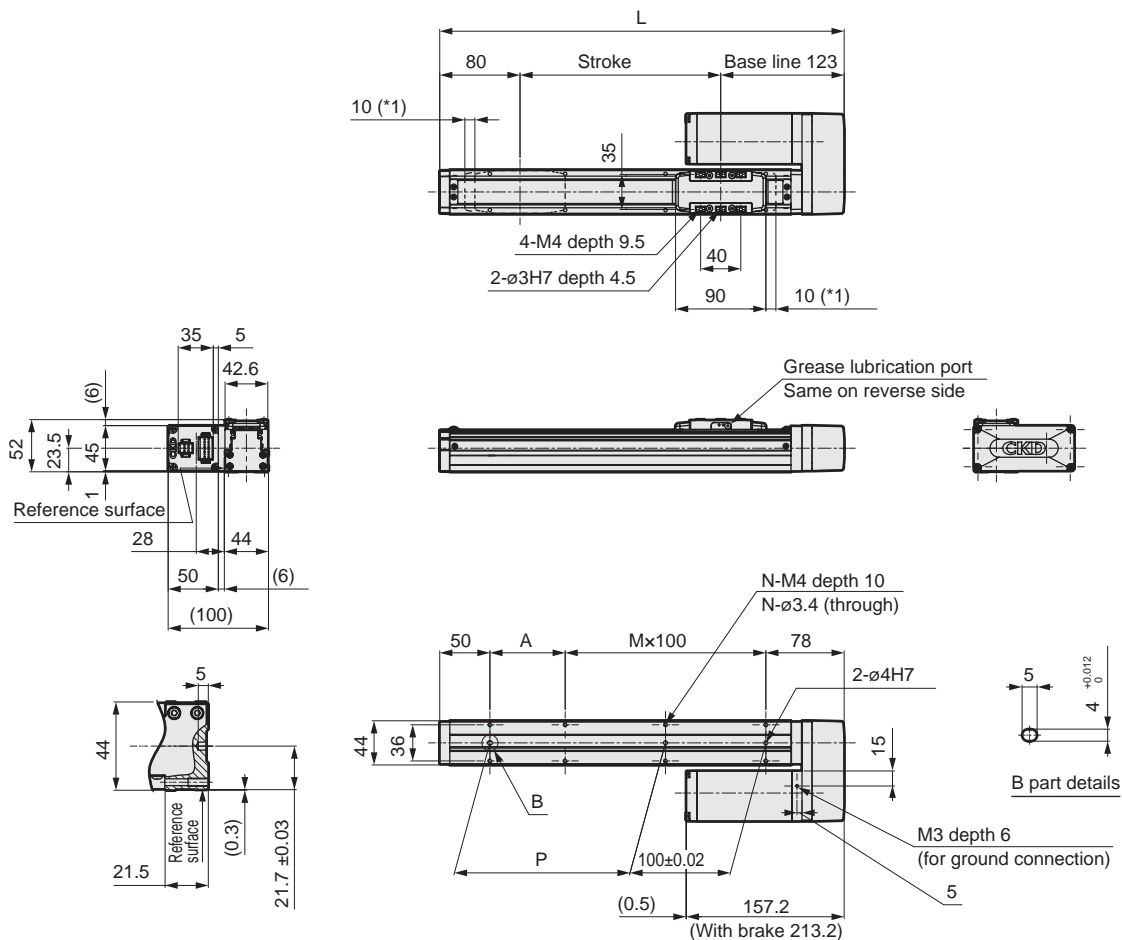
ECG-A

Safety precautions

# EJSG-04\*

## Dimensions Left motor mounting

### ● EJSG-04L



\*1: Operating range to the mechanical stopper

Stroke code		0050	0100	0150	0200	0250	0300	0350	0400	0450	0500	0550	0600	0650	0700	0750	0800
Stroke (mm)		50	100	150	200	250	300	350	400	450	500	550	600	650	700	750	800
L		253	303	353	403	453	503	553	603	653	703	753	803	853	903	953	1003
A		25	75	25	75	25	75	25	75	25	75	25	75	25	75	25	75
M		1	1	2	2	3	3	4	4	5	5	6	6	7	7	8	8
N		6	6	8	8	10	10	12	12	14	14	16	16	18	18	20	20
P		25	75	125	175	225	275	325	375	425	475	525	575	625	675	725	775
Weight (kg)	Without brake	1.7	1.8	1.9	2.0	2.2	2.3	2.4	2.5	2.6	2.8	2.9	3.0	3.1	3.2	3.4	3.5
	With brake	2.1	2.2	2.3	2.4	2.6	2.7	2.8	2.9	3.0	3.2	3.3	3.4	3.5	3.6	3.8	3.9

EJSG

EJSG-G

EJSG-C

EJSG-P4

EJSG-FP1

Model selection

ECG-A

Safety precautions

Notes

EJSG
EJSG-G
EJSG-C
EJSG-P4
EJSG-FP1
Model selection
ECG-A
Safety precautions



# Electric actuator Slider EJSG-05E

Straight motor mounting

42 Stepper motor



## How to order

**EJSG - 05 E 05 0300 N B N - C S03**

**1** Body size

05	Body width 54mm
----	--------------------

Motor mounting direction

E	Straight mounting
---	-------------------

**3** Screw lead

05	5 mm
10	10 mm
20	20 mm

\*1 Select the controller from page 117.

\*2 When using vertically, select "Yes".

\*3 Refer to page 128 for relay cable dimensions.

**4** Stroke

0050 to 0800	50 mm (In 50 mm increments) 800 mm
--------------	--

**5** Brake \*2

N	None
B	Yes

**6** Encoder \*1

B	Battery-less absolute encoder
C	Incremental encoder (For ECG)

**7** Relay cable \*3

N00	None
S01	Fixed cable 1 m
S03	Fixed cable 3 m
S05	Fixed cable 5 m
S10	Fixed cable 10 m
R01	Movable cable 1 m
R03	Movable cable 3 m
R05	Movable cable 5 m
R10	Movable cable 10 m

EAR-compliant product (EAR99-embedded product)

## Specifications

Supported controllers	ECG-A			
Motor	<input type="checkbox"/> 42 Stepper motor			
Encoder type	Battery-less absolute encoder Incremental encoder			
Drive method	Ball screw $\varnothing 12$			
Stroke mm	50 to 800			
Screw lead mm	5	10	20	
Max. workload kg *1	Horizontal	40.0	27.5	18.3
	Vertical	14.0	7.0	2.5
Operation speed range *2 mm/s	6 to 290	12 to 500	25 to 850	
Max. acceleration/ deceleration G	Horizontal	0.7	0.7	0.7
	Vertical	0.3	0.3	0.3
Maximum pushing force N	220	110	55	
Pressing operation speed rangemm/s	5 to 20	5 to 20	5 to 20	
Repeatability mm	$\pm 0.01$			
Lost motion mm	0.1 or less			
Static allowable moment N·m	MP:103 MY:103 MR:144			
Motor power supply voltage	24 VDC $\pm 10\%$			
Motor section max. instantaneous current A	2.7			
Brake	Model, power supply voltage	Non-excitation operation, 24 VDC $\pm 10\%$		
	Power consumption W	6.1		
	Holding force N	168	84	42
Insulation resistance	10 M $\Omega$ , 500 VDC			
Withstand voltage	500 VAC for 1 minute			
Operating ambient temperature, humidity	10 to 40 °C (no freezing) 35 to 80% RH (no condensation)			
	Storage ambient temperature, humidity			
Storage ambient temperature, humidity	-10 to 50°C (no freezing) 35 to 80% RH (no condensation)			
	Atmosphere			
No corrosive gas, explosive gas, or dust				

\*1 Load capacity varies according to acceleration/deceleration and speed. Refer to page 17 for details.

\*2 The maximum speed may decrease depending on the conditions.

### Stroke and max. speed

Screw lead	Stroke (mm/s)					
	50 to 550	600	650	700	750	800
5	290	260	225	200	175	150
10	500	500	455	400	355	315
20	850	850	850	800	710	630

### Speed and load capacity

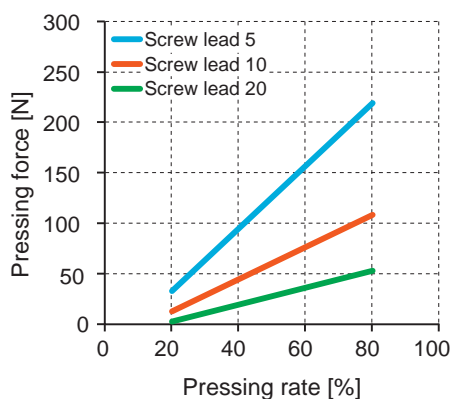
[When installed horizontally]

Speed (mm/s)	Acceleration/deceleration (G)					
	0.3			0.7		
	Screw lead (mm)					
	5	10	20	5	10	20
6	40.0			40.0		
12	40.0	27.5		40.0	27.5	
25	40.0	27.5	18.3	40.0	27.5	8.3
50	40.0	27.5	18.3	40.0	27.5	8.3
100	40.0	27.5	18.3	40.0	27.5	8.3
150	26.7	27.5	10.0	26.7	27.5	6.7
200	26.7	27.5	10.0	26.7	27.5	6.7
250	26.7	15.8	10.0	26.7	12.5	6.7
290	26.7	15.8	10.0	15.8	12.5	6.7
300		15.8	10.0		12.5	6.7
400		10.0	8.3		9.2	5.0
500		5.8	8.3		2.5	5.0
700			4.2			2.5
800			2.5			1.7
850			0.8			0.4

[When installed vertically]

Speed (mm/s)	Acceleration/deceleration (G)		
	0.3		
	Screw lead (mm)		
	5	10	20
6	14.0		
12	14.0	7.0	
25	14.0	7.0	2.5
50	14.0	7.0	2.5
100	9.2	7.0	2.5
150	7.5	7.0	2.5
200	4.2	7.0	2.5
210	3.3	2.5	2.5
225	3.3	2.5	2.5
250	2.1	2.5	2.5
300		2.5	2.5
325		2.1	2.5
350		2.1	2.5
400		1.3	2.5
425		0.8	0.4
500			0.4

### Pressing force

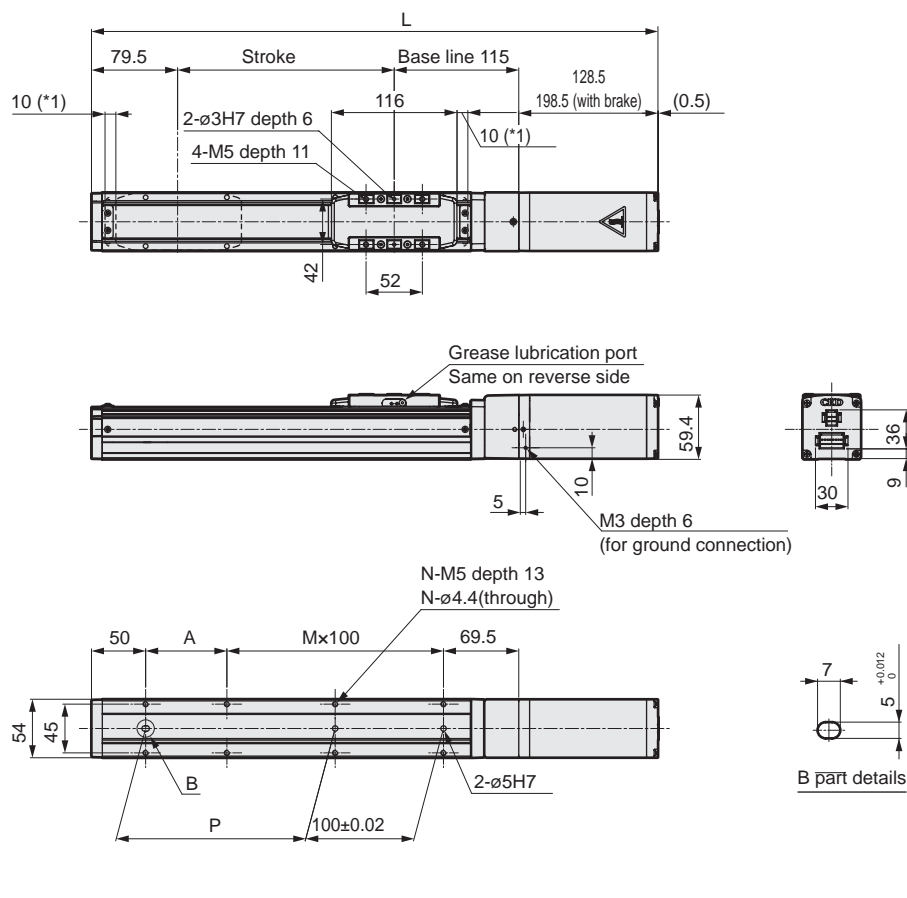


\*The above pressing force is a reference value. Variation may occur according to conditions such as pressing speed.

# EJSG-05E

## Dimensions Straight motor mounting

### ● EJSG-05E



\*1: Operating range to the mechanical stopper

Stroke code	0050	0100	0150	0200	0250	0300	0350	0400	0450	0500	0550	0600	0650	0700	0750	0800	
Stroke (mm)	50	100	150	200	250	300	350	400	450	500	550	600	650	700	750	800	
L	Without brake	373	423	473	523	573	623	673	723	773	823	873	923	973	1023	1073	1123
	With brake	443	493	543	593	643	693	743	793	843	893	943	993	1043	1093	1143	1193
A	25	75	25	75	25	75	25	75	25	75	25	75	25	75	25	75	
M	1	1	2	2	3	3	4	4	5	5	6	6	7	7	8	8	
N	6	6	8	8	10	10	12	12	14	14	16	16	18	18	20	20	
P	25	75	125	175	225	275	325	375	425	475	525	575	625	675	725	775	
Weight (kg)	Without brake	2.4	2.6	2.7	2.8	3.0	3.1	3.3	3.4	3.5	3.7	3.8	4.0	4.1	4.2	4.4	4.5
	With brake	3.2	3.3	3.5	3.6	3.7	3.9	4.0	4.2	4.3	4.4	4.6	4.7	4.9	5.0	5.1	5.3

Model selection  
Technical data

ECG-A

Safety  
precautions

Notes

EJSG

EJSG-G

EJSG-C

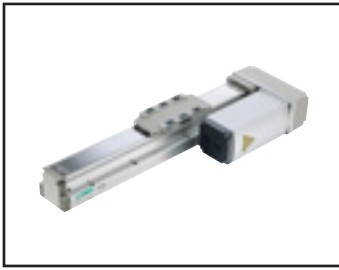
EJSG-P4

EJSG-FP1

Model selection  
Technical data

ECG-A

Safety  
precautions



# Electric actuator Slider EJSG-05\*

Motor side mounting (left, right, bottom)

42 Stepper motor



## How to order

**EJSG - 05 R 05 0300 N B N - C S03**

**1 Body size**

<b>05</b>	Body width 54mm
-----------	--------------------

**2 Motor mounting direction\*2**

<b>R</b>	Right mounting
<b>D</b>	Bottom mounting
<b>L</b>	Left mounting

**3 Screw lead**

<b>05</b>	5 mm
<b>10</b>	10 mm
<b>20</b>	20 mm

**4 Stroke** \*2

<b>0050 to 0800</b>	50 mm (In 50 mm increments) 800 mm
---------------------	--

**5 Brake** \*3

<b>N</b>	None
<b>B</b>	Yes

**6 Encoder**

<b>B</b>	Battery-less absolute encoder
<b>C</b>	Incremental encoder

**7 Relay cable** \*4

<b>N00</b>	None
<b>S01</b>	Fixed cable 1 m
<b>S03</b>	Fixed cable 3 m
<b>S05</b>	Fixed cable 5 m
<b>S10</b>	Fixed cable 10 m
<b>R01</b>	Movable cable 1 m
<b>R03</b>	Movable cable 3 m
<b>R05</b>	Movable cable 5 m
<b>R10</b>	Movable cable 10 m

\*1 Select the controller from page 117.

\*2 When the motor mounting direction "D" is selected, the stroke is selected from "0250 (250 mm)" to "0800 (800 mm)".

\*3 When using vertically, select "Yes".

\*4 Refer to page 128 for relay cable dimensions.

EAR-compliant product (EAR99-embedded product)

## Specifications

Supported controllers	ECG-A		
Motor	<input type="checkbox"/> 42 Stepper motor		
Encoder type	Battery-less absolute encoder Incremental encoder		
Drive method	Ball screw $\phi$ 12		
Stroke mm	50 to 800		
Screw lead mm	5	10	20
Max. workload kg	40.0	27.5	18.3
Horizontal			
Vertical *1	10.0	3.3	0.8
Operation speed range *2 mm/s	6 to 250	12 to 400	25 to 700
Maximum acceleration/ deceleration G	0.7	0.7	0.7
Horizontal			
Vertical	0.3	0.3	0.3
Maximum pushing force N	220	110	55
Pressing operation speed range mm/s	5 to 20	5 to 20	5 to 20
Repeatability mm	$\pm$ 0.01		
Lost motion mm	0.1 or less		
Static allowable moment N·m	MP:103 MY:103 MR:144		
Motor power supply voltage	24 VDC $\pm$ 10%		
Motor section max. instantaneous current A	2.7		
Brake	Model, power supply voltage	Non-excitation operation, 24 VDC $\pm$ 10%	
	Power consumption W	6.1	
	Holding force N	168	84
Insulation resistance	10 M $\Omega$ , 500 VDC		
Withstand voltage	500 VAC for 1 minute		
Operating ambient temperature, humidity	10 to 40 °C (no freezing) 35 to 80% RH (no condensation)		
Storage ambient temperature, humidity	-10 to 50°C (no freezing) 35 to 80% RH (no condensation)		
Atmosphere	No corrosive gas, explosive gas, or dust		

\*1 Load capacity varies according to acceleration/deceleration and speed. Refer to page 21 for details.

\*2 The maximum speed may decrease depending on the conditions.

### Stroke and max. speed

Thread Lead	Stroke (mm/s)				
	50 to 600	650	700	750	800
5	250	225	200	175	150
10	400	400	400	355	315
20	700	700	700	700	630

### Speed and load capacity

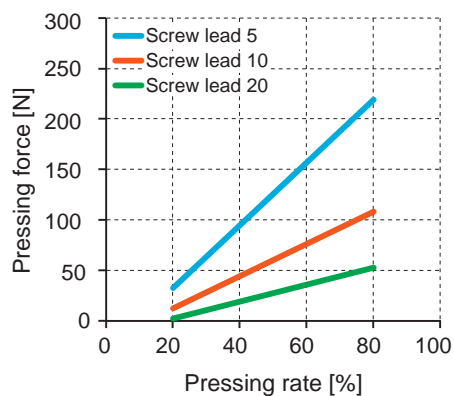
[When installed horizontally]

Speed (mm/s)	Acceleration/deceleration (G)					
	0.3			0.7		
	Screw lead (mm)					
	5	10	20	5	10	20
6	40.0			40.0		
12	40.0	27.5		40.0	27.5	
25	40.0	27.5	18.3	40.0	27.5	7.5
50	40.0	27.5	18.3	40.0	27.5	7.5
100	40.0	27.5	18.3	40.0	27.5	7.5
150	26.7	23.3	10.0	26.7	20.0	5.0
200	26.7	23.3	10.0	26.7	20.0	5.0
250	8.3	11.7	10.0	8.3	11.7	5.0
300		11.7	10.0		11.7	5.0
400		3.3	6.7		3.3	4.2
500			6.7			4.2
700			3.3			1.7

[When installed vertically]

Speed (mm/s)	Acceleration/deceleration (G)		
	0.3		
	Screw lead (mm)		
	5	10	20
6	10.0		
12	10.0	3.3	
25	10.0	3.3	0.8
50	10.0	3.3	0.8
100	8.3	3.3	0.8
150	6.7	2.1	0.8
200	2.5	2.1	0.8
210	0.8	1.3	0.8
300		1.3	0.8
325		0.4	0.8
400			0.8
500			0.4

### Pressing force

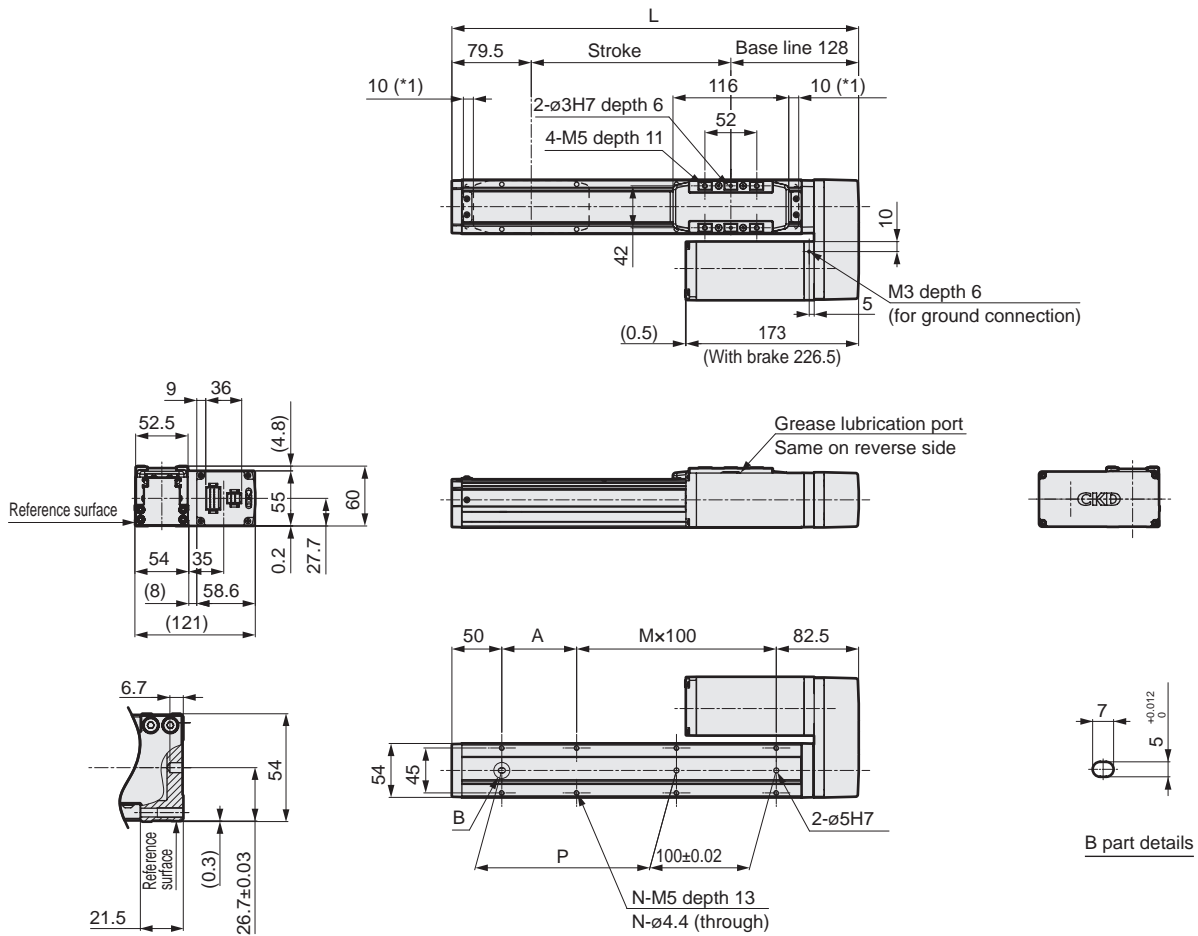


\*The above pressing force is a reference value. Variation may occur according to conditions such as pressing speed.

# EJSG-05\*

## Dimensions Right motor mounting

### ● EJSG-05R

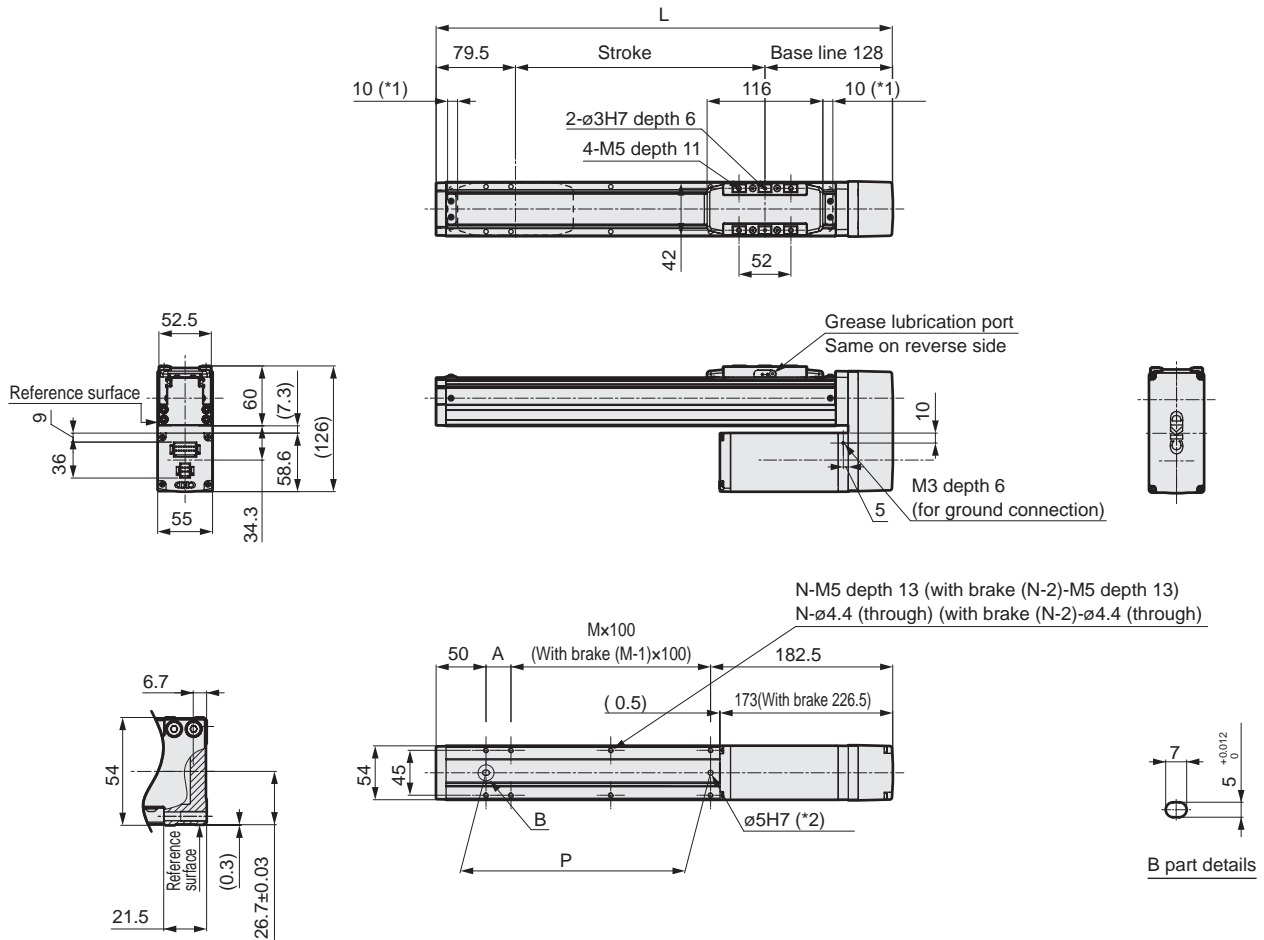


\*1: Operating range to the mechanical stopper

Stroke code	0050	0100	0150	0200	0250	0300	0350	0400	0450	0500	0550	0600	0650	0700	0750	0800	
Stroke (mm)	50	100	150	200	250	300	350	400	450	500	550	600	650	700	750	800	
L	257.5	307.5	357.5	407.5	457.5	507.5	557.5	607.5	657.5	707.5	757.5	807.5	857.5	907.5	957.5	1007.5	
A	25	75	25	75	25	75	25	75	25	75	25	75	25	75	25	75	
M	1	1	2	2	3	3	4	4	5	5	6	6	7	7	8	8	
N	6	6	8	8	10	10	12	12	14	14	16	16	18	18	20	20	
P	25	75	125	175	225	275	325	375	425	475	525	575	625	675	725	775	
Weight (kg)	Without brake	2.6	2.7	2.8	3.0	3.1	3.3	3.4	3.5	3.7	3.8	3.9	4.1	4.2	4.4	4.5	4.6
	With brake	3.3	3.5	3.6	3.7	3.9	4.0	4.2	4.3	4.4	4.6	4.7	4.9	5.0	5.1	5.3	5.4

Dimensions Bottom motor mounting

● EJSG-05D



\*1: Operating range to the mechanical stopper

\*2: When the type with brake is selected, the  $\text{ø}5\text{H}7$  cannot be used because it is hidden in the motor part.

Stroke code	0250	0300	0350	0400	0450	0500	0550	0600	0650	0700	0750	0800
Stroke (mm)	250	300	350	400	450	500	550	600	650	700	750	800
L	457.5	507.5	557.5	607.5	657.5	707.5	757.5	807.5	857.5	907.5	957.5	1007.5
A	25	75	25	75	25	75	25	75	25	75	25	75
M	2	2	3	3	4	4	5	5	6	6	7	7
N	8	8	10	10	12	12	14	14	16	16	18	18
P	225	275	325	375	425	475	525	575	625	675	725	775
Weight (kg)	Without brake	3.1	3.3	3.4	3.5	3.7	3.8	3.9	4.1	4.2	4.4	4.6
	With brake	3.9	4.0	4.2	4.3	4.4	4.6	4.7	4.9	5.0	5.1	5.4

EJSG

---

EJSG-G

---

EJSG-C

---

EJSG-P4

---

EJSG-FP1

---

Model selection  
Technical data

---

ECG-A

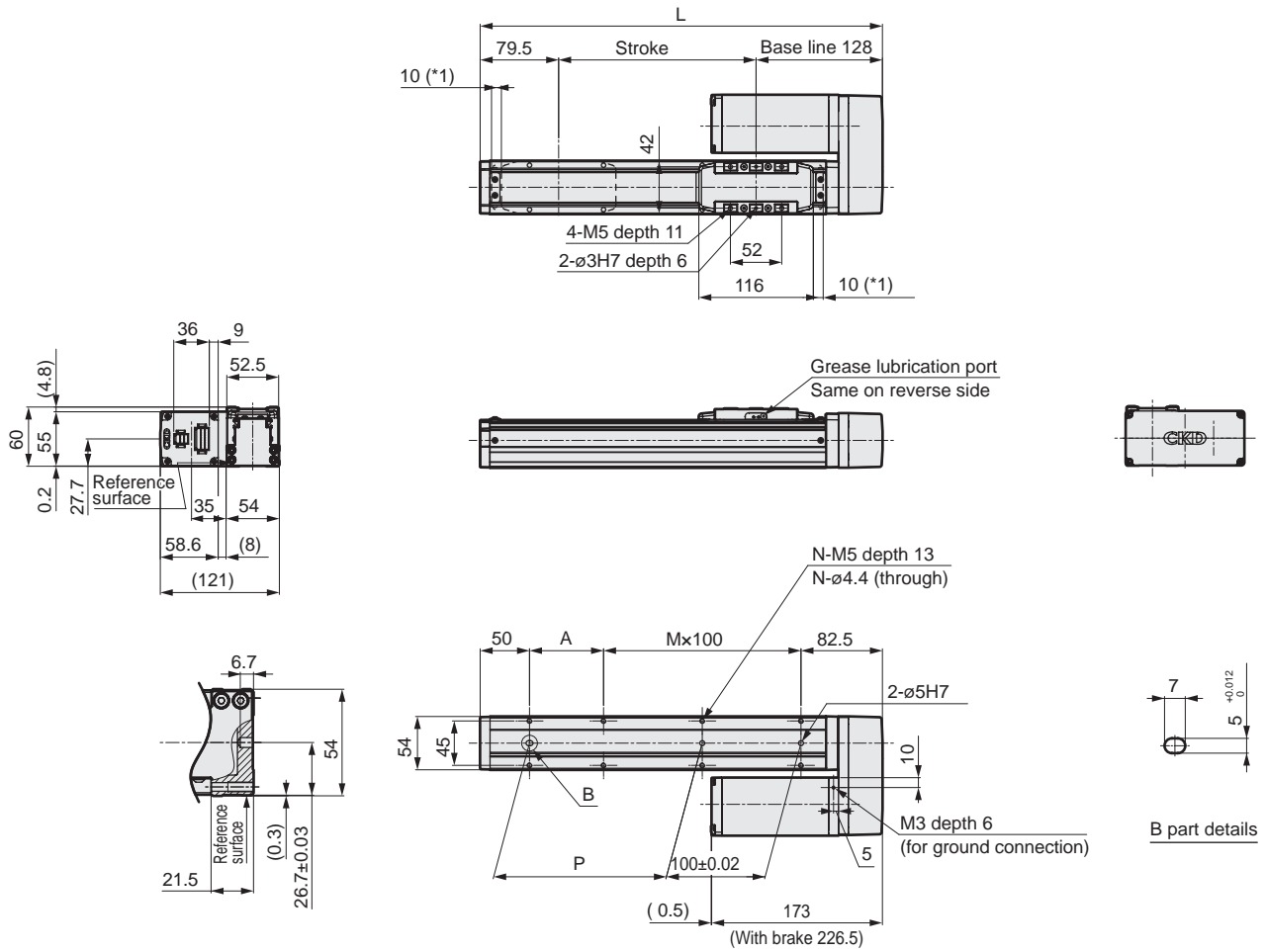
---

Safety  
precautions

# EJSG-05\*

## Dimensions Left motor mounting

### ● EJSG-05L



\*1: Operating range to the mechanical stopper

Stroke code	0050	0100	0150	0200	0250	0300	0350	0400	0450	0500	0550	0600	0650	0700	0750	0800	
Stroke (mm)	50	100	150	200	250	300	350	400	450	500	550	600	650	700	750	800	
L	257.5	307.5	357.5	407.5	457.5	507.5	557.5	607.5	657.5	707.5	757.5	807.5	857.5	907.5	957.5	1007.5	
A	25	75	25	75	25	75	25	75	25	75	25	75	25	75	25	75	
M	1	1	2	2	3	3	4	4	5	5	6	6	7	7	8	8	
N	6	6	8	8	10	10	12	12	14	14	16	16	18	18	20	20	
P	25	75	125	175	225	275	325	375	425	475	525	575	625	675	725	775	
Weight (kg)	Without brake	2.6	2.7	2.8	3.0	3.1	3.3	3.4	3.5	3.7	3.8	3.9	4.1	4.2	4.4	4.5	4.6
	With brake	3.3	3.5	3.6	3.7	3.9	4.0	4.2	4.3	4.4	4.6	4.7	4.9	5.0	5.1	5.3	5.4

Notes

EJSG	EJSG-G	EJSG-C	EJSG-P4	EJSG-FP1	Model selection Technical data	ECG-A	Safety precautions
------	--------	--------	---------	----------	-----------------------------------	-------	-----------------------



# Electric actuator Slider EJSG-08E

Straight motor mounting

56 Stepping motor



## How to order

**EJSG - 08 E 05 0300 N B N - C S03**

① Body size  
08 Body width 82mm

② Motor mounting direction  
E Straight mounting

③ Screw lead  
05 5 mm  
10 10 mm  
20 20 mm

④ Stroke  
0050 to 1100  
50 mm (In 50 mm increments)  
1100 mm

⑤ Brake \*2  
N None  
B Yes

⑥ Encoder \*1  
B Battery-less absolute encoder  
C Incremental encoder

⑦ Relay cable \*3

N00	None
S01	Fixed cable 1 m
S03	Fixed cable 3 m
S05	Fixed cable 5 m
S10	Fixed cable 10 m
R01	Movable cable 1 m
R03	Movable cable 3 m
R05	Movable cable 5 m
R10	Movable cable 10 m

\*1 Select the controller from page 117.

\*2 When using vertically, select "Yes".

\*3 Refer to page 128 for relay cable dimensions.

EAR-compliant product (EAR99-embedded product)

## Specifications

Supported controllers	ECG-A			
Motor	<input type="checkbox"/> 56 Stepping motor			
Encoder type	Battery-less absolute encoder Incremental encoder			
Drive method	Ball screw $\varnothing 15$			
Stroke mm	50 to 1100			
Screw lead mm	5	10	20	
Max. workload kg *1	Horizontal	80.0	70.0	30.0
	Vertical	43.3	28.3	3.3
Operation speed range *2mm/s	6 to 150	12 to 250	25 to 500	
Max. acceleration/ deceleration G	Horizontal	0.7	0.7	0.7
	Vertical	0.3	0.3	0.3
Maximum pushing force N	965	482	241	
Pressing operation speed rangemm/s	5 to 20	5 to 20	5 to 20	
Repeatability mm	$\pm 0.01$			
Lost motion mm	0.1 or less			
Static allowable moment N·m	MP:203 MY:203 MR:336			
Motor power supply voltage	24 VDC $\pm 10\%$			
Motor section max. instantaneous currentA	4.0			
Brake	Model, power supply voltage	Non-excitation operation, 24 VDC $\pm 10\%$		
	Power consumptionW	7.2		
	Holding force N	768	384	192
Insulation resistance	10 M $\Omega$ , 500 VDC			
Withstand voltage	500 VAC for 1 minute			
Operating ambient temperature, humidity	10 to 40 °C (no freezing) 35 to 80% RH (no condensation)			
	-10 to 50°C (no freezing) 35 to 80% RH (no condensation)			
Storage ambient temperature, humidity	-10 to 50°C (no freezing) 35 to 80% RH (no condensation)			
Atmosphere	No corrosive gas, explosive gas, or dust			

\*1 Load capacity varies according to acceleration/deceleration and speed. Refer to page 27 for details.

\*2 The maximum speed may decrease depending on the conditions.

### Stroke and max. speed

Screw lead	Stroke				
	50 to 900	950	1000	1050	1100
5	150	145	130	120	110
10	250	250	250	240	220
20	500	500	500	480	440

(mm/s)

### Speed and load capacity

[When installed horizontally]

Speed (mm/s)	Acceleration/deceleration (G)					
	0.3			0.7		
	Screw lead (mm)					
	5	10	20	5	10	20
6	80.0			80.0		
12	80.0	70.0		80.0	70.0	
25	80.0	70.0	30.0	80.0	70.0	26.7
50	80.0	70.0	30.0	80.0	70.0	26.7
75	80.0	70.0	30.0	80.0	70.0	26.7
100	40.0	70.0	30.0	40.0	70.0	26.7
125	40.0	70.0	30.0	40.0	70.0	18.3
150	40.0	70.0	30.0	35.0	70.0	18.3
200		28.3	30.0		17.5	18.3
250		28.3	26.7		17.5	18.3
300			26.7			18.3
400			20.0			11.7
500			3.3			

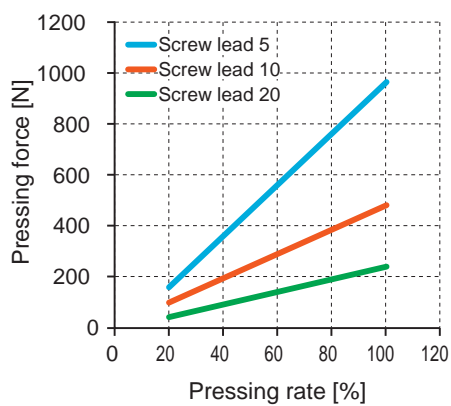
(kg)

[When installed vertically]

Speed (mm/s)	Acceleration/deceleration (G)		
	0.3		
	Screw lead (mm)		
	5	10	20
6	43.3		
12	43.3	28.3	
25	43.3	28.3	3.3
50	43.3	28.3	3.3
75	15.0	12.5	3.3
100	15.0	12.5	3.3
125	2.9	10.0	3.3
150	2.9	10.0	3.3
200		1.7	3.3
250		1.7	3.3
300			3.3
350			0.8

(kg)

### Pressing force

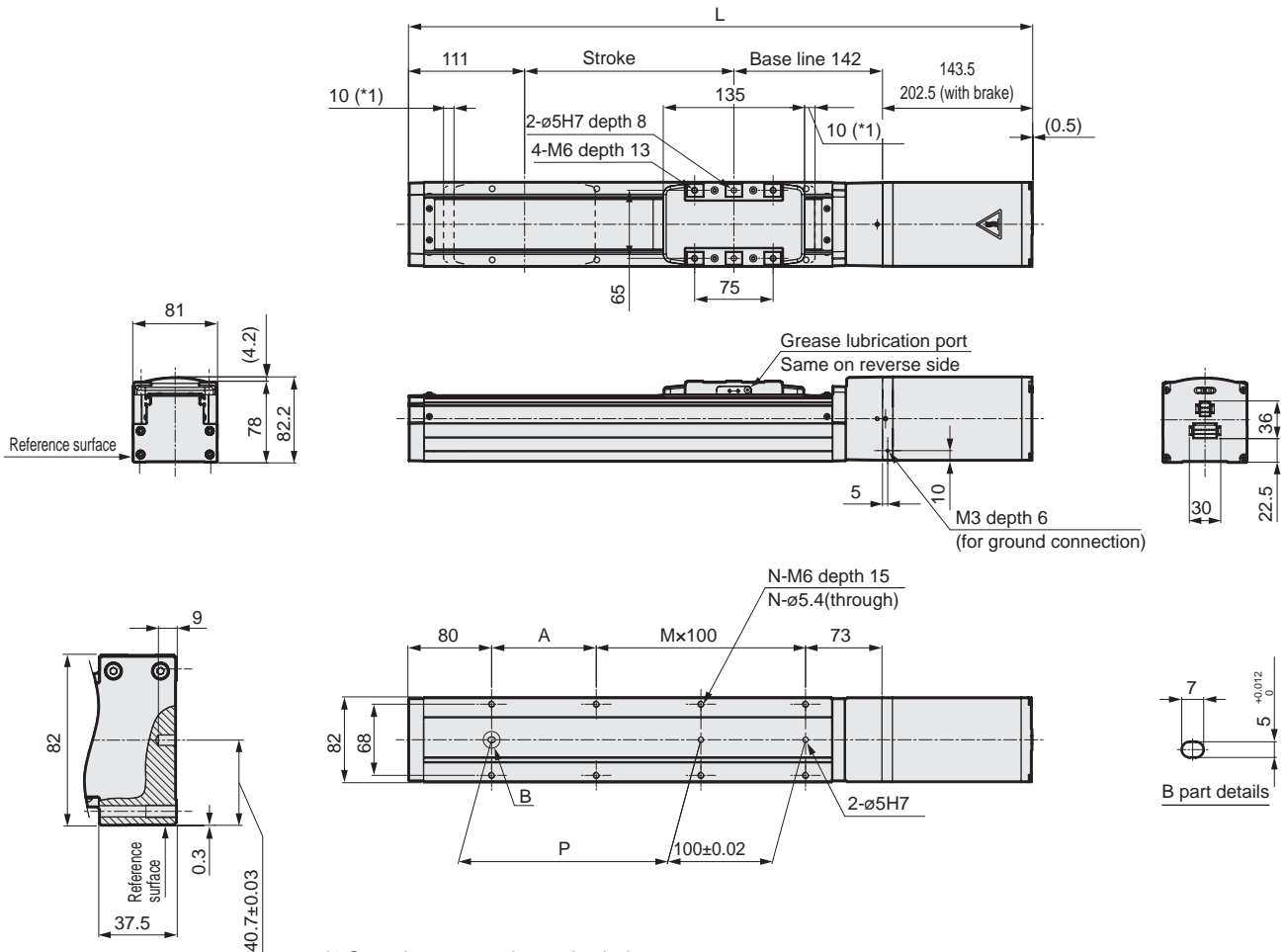


\*The above pressing force is a reference value. Variation may occur according to conditions such as pressing speed.

# EJSG-08E

## Dimensions Straight motor mounting

### ● EJSG-08E



\*1 Operating range to the mechanical stopper

Stroke code	0050	0100	0150	0200	0250	0300	0350	0400	0450	0500	0550	0600	0650	0700	0750	0800	
Stroke (mm)	50	100	150	200	250	300	350	400	450	500	550	600	650	700	750	800	
L	Without brake	446.5	496.5	546.5	596.5	646.5	696.5	746.5	796.5	846.5	896.5	946.5	996.5	1046.5	1096.5	1146.5	1196.5
	With brake	505.5	555.5	605.5	655.5	705.5	755.5	805.5	855.5	905.5	955.5	1005.5	1055.5	1105.5	1155.5	1205.5	1255.5
A	150	100	50	100	50	100	50	100	50	100	50	100	50	100	50	100	
M	0	1	2	2	3	3	4	4	5	5	6	6	7	7	8	8	
N	4	6	8	8	10	10	12	12	14	14	16	16	18	18	20	20	
P	50	100	150	200	250	300	350	400	450	500	550	600	650	700	750	800	
Weight (kg)	Without brake	5.7	6.0	6.4	6.7	7.0	7.4	7.7	8.0	8.4	8.7	9.0	9.4	9.7	10.0	10.4	10.7
	With brake	6.7	7.1	7.4	7.7	8.1	8.4	8.7	9.1	9.4	9.7	10.1	10.4	10.7	11.1	11.4	11.8

Stroke code	0850	0900	0950	1000	1050	1100	
Stroke (mm)	850	900	950	1000	1050	1100	
L	Without brake	1246.5	1296.5	1346.5	1396.5	1446.5	1496.5
	With brake	1305.5	1355.5	1405.5	1455.5	1505.5	1555.5
A	50	100	50	100	50	100	
M	9	9	10	10	11	11	
N	22	22	24	24	26	26	
P	850	900	950	1000	1050	1100	
Weight (kg)	Without brake	11.0	11.4	11.7	12.1	12.4	12.7
	With brake	12.1	12.4	12.8	13.1	13.4	13.8

Notes

EJSG

EJSG-G

EJSG-C

EJSG-P4

EJSG-FP1

Model selection  
Technical data

ECG-A

Safety  
precautions



Electric actuator Slider

# EJSG-08\*

Motor side mounting (left, right, bottom)

56 Stepping motor



## How to order

**EJSG - 08 R 05 0300 N B N - C S03**

<b>1</b> Body size <b>08</b> Body width 82mm	<b>2</b> Motor mounting direction*2 <b>R</b> Right mounting <b>D</b> Bottom mounting <b>L</b> Left mounting	<b>3</b> Screw lead <b>05</b> 5 mm <b>10</b> 10 mm <b>20</b> 20 mm	<b>4</b> Stroke*2 <b>0050 to 1100</b> 50 mm (In 50 mm increments) to 1100 mm	<b>5</b> Brake*3 <b>N</b> None <b>B</b> Yes	<b>6</b> Encoder <b>B</b> Battery-less absolute encoder <b>C</b> Incremental encoder	<b>7</b> Relay cable*4 <b>N00</b> None <b>S01</b> Fixed cable 1 m <b>S03</b> Fixed cable 3 m <b>S05</b> Fixed cable 5 m <b>S10</b> Fixed cable 10 m <b>R01</b> Movable cable 1 m <b>R03</b> Movable cable 3 m <b>R05</b> Movable cable 5 m <b>R10</b> Movable cable 10 m
---	--	---	---	---	--	---

\*1 Select the controller from page 117.  
 \*2 When the motor mounting direction "D" is selected, the stroke is selected from "0250 (250 mm)" to "1100 (1100 mm)".  
 \*3 When using vertically, select "Yes".  
 \*4 Refer to page 128 for relay cable dimensions.

EAR-compliant product (EAR99-embedded product)

## Specifications

Supported controllers	ECG-A			
Motor	<input type="checkbox"/> 56 Stepping motor			
Encoder type	Battery-less absolute encoder Incremental encoder			
Drive method	Ball screw ø15			
Stroke mm	50 to 1100			
Screw lead mm	5	10	20	
Max. workload kg*1	Horizontal	80.0	70.0	30.0
	Vertical	33.3	18.3	3.3
Operation speed range*2 mm/s	6 to 125	12 to 250	25 to 400	
Max. acceleration/ deceleration G	Horizontal	0.7	0.7	0.7
	Vertical	0.3	0.3	0.3
Maximum pushing force N	965	482	241	
Pressing operation speed rangemm/s	5 to 20	5 to 20	5 to 20	
Repeatability mm	±0.01			
Lost motion mm	0.1 or less			
Static allowable moment N·m	MP:203 MY:203 MR:336			
Motor power supply voltage	24 VDC ±10%			
Motor section max. instantaneous currentA	4.0			
Brake	Model, power supply voltage	Non-excitation operation, 24 VDC ±10%		
	Power consumptionW	7.2		
	Holding force N	768	384	192
Insulation resistance	10 MΩ, 500 VDC			
Withstand voltage	500 VAC for 1 minute			
Operating ambient temperature, humidity	10 to 40 °C (no freezing) 35 to 80% RH (no condensation)			
	-10 to 50°C (no freezing) 35 to 80% RH (no condensation)			
Storage ambient temperature, humidity	-10 to 50°C (no freezing) 35 to 80% RH (no condensation)			
Atmosphere	No corrosive gas, explosive gas, or dust			

\*1 Load capacity varies according to acceleration/deceleration and speed. Refer to page 31 for details.  
 \*2 The maximum speed may decrease depending on the conditions.

## Stroke and max. speed

Screw lead	Stroke (mm/s)		
	50 to 1000	1050	1100
5	125	120	110
10	250	240	220
20	400	400	400

## Speed and load capacity

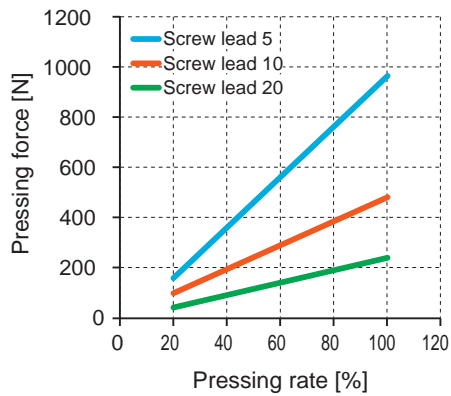
[When installed horizontally]

Speed (mm/s)	Acceleration/deceleration (G)					
	0.3			0.7		
	Screw lead (mm)					
	5	10	20	5	10	20
6	80.0			80.0		
12	80.0	70.0		80.0	70.0	
25	80.0	70.0	30.0	80.0	70.0	26.7
50	80.0	70.0	30.0	80.0	70.0	26.7
75	68.3	70.0	30.0	68.3	70.0	26.7
100	40.0	70.0	30.0	40.0	70.0	26.7
125	40.0	70.0	30.0	40.0	30.0	18.3
150		70.0	30.0		30.0	18.3
200		28.3	30.0		17.5	18.3
250		21.7	6.7		17.5	6.7
300			6.7			6.7
400			3.3			3.3

[When installed vertically]

Speed (mm/s)	Acceleration/deceleration (G)		
	0.3		
	Screw lead (mm)		
	5	10	20
6	33.3		
12	33.3	18.3	
25	33.3	18.3	3.3
50	25.0	18.3	3.3
75	15.0	12.5	3.3
100	12.5	12.5	3.3
125	2.9	8.3	3.3
150		8.3	3.3
200		1.7	3.3
250			3.3
300			3.3
350			0.8

## Pressing force

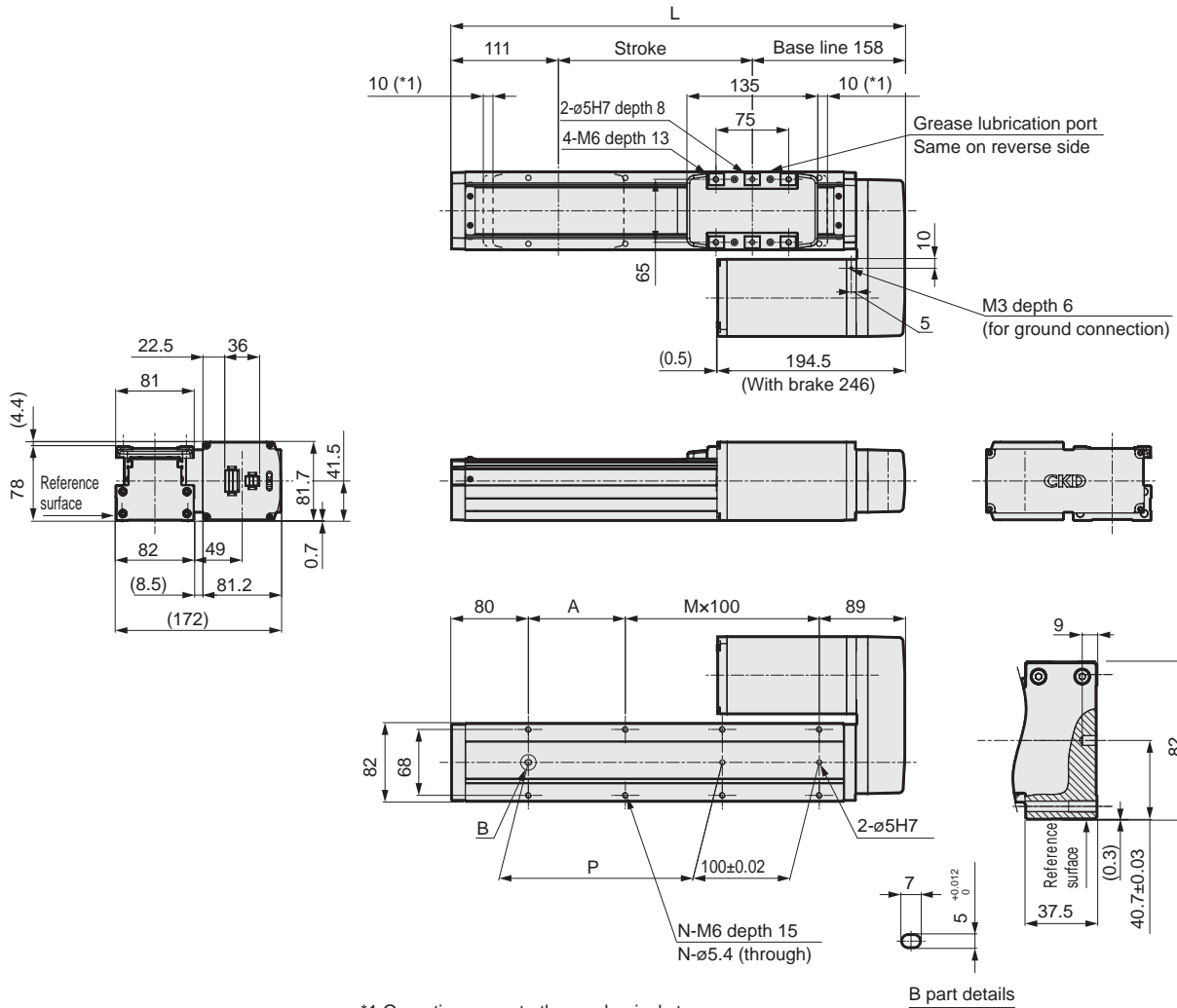


\*The above pressing force is a reference value. Variation may occur according to conditions such as pressing speed.

# EJSG-08\*

## Dimensions Right motor mounting

### ● EJSG-08R



\*1 Operating range to the mechanical stopper

Stroke code	0050	0100	0150	0200	0250	0300	0350	0400	0450	0500	0550	0600	0650	0700	0750	0800
Stroke (mm)	50	100	150	200	250	300	350	400	450	500	550	600	650	700	750	800
L	319	369	419	469	519	569	619	669	719	769	819	869	919	969	1019	1069
A	150	100	50	100	50	100	50	100	50	100	50	100	50	100	50	100
M	0	1	2	2	3	3	4	4	5	5	6	6	7	7	8	8
N	4	6	8	8	10	10	12	12	14	14	16	16	18	18	20	20
P	50	100	150	200	250	300	350	400	450	500	550	600	650	700	750	800
Weight (kg)	Without brake	5.9	6.2	6.6	6.9	7.2	7.6	7.9	8.2	8.6	8.9	9.2	9.6	9.9	10.2	10.6
	With brake	6.9	7.3	7.6	7.9	8.3	8.6	8.9	9.3	9.6	9.9	10.3	10.6	10.9	11.3	11.6

Stroke code	0850	0900	0950	1000	1050	1100
Stroke (mm)	850	900	950	1000	1050	1100
L	1119	1169	1219	1269	1319	1369
A	50	100	50	100	50	100
M	9	9	10	10	11	11
N	22	22	24	24	26	26
P	850	900	950	1000	1050	1100
Weight (kg)	Without brake	11.3	11.6	11.9	12.3	12.6
	With brake	12.3	12.6	13.0	13.3	13.6

EJSG

EJSG-G

EJSG-C

EJSG-P4

EJSG-FP1

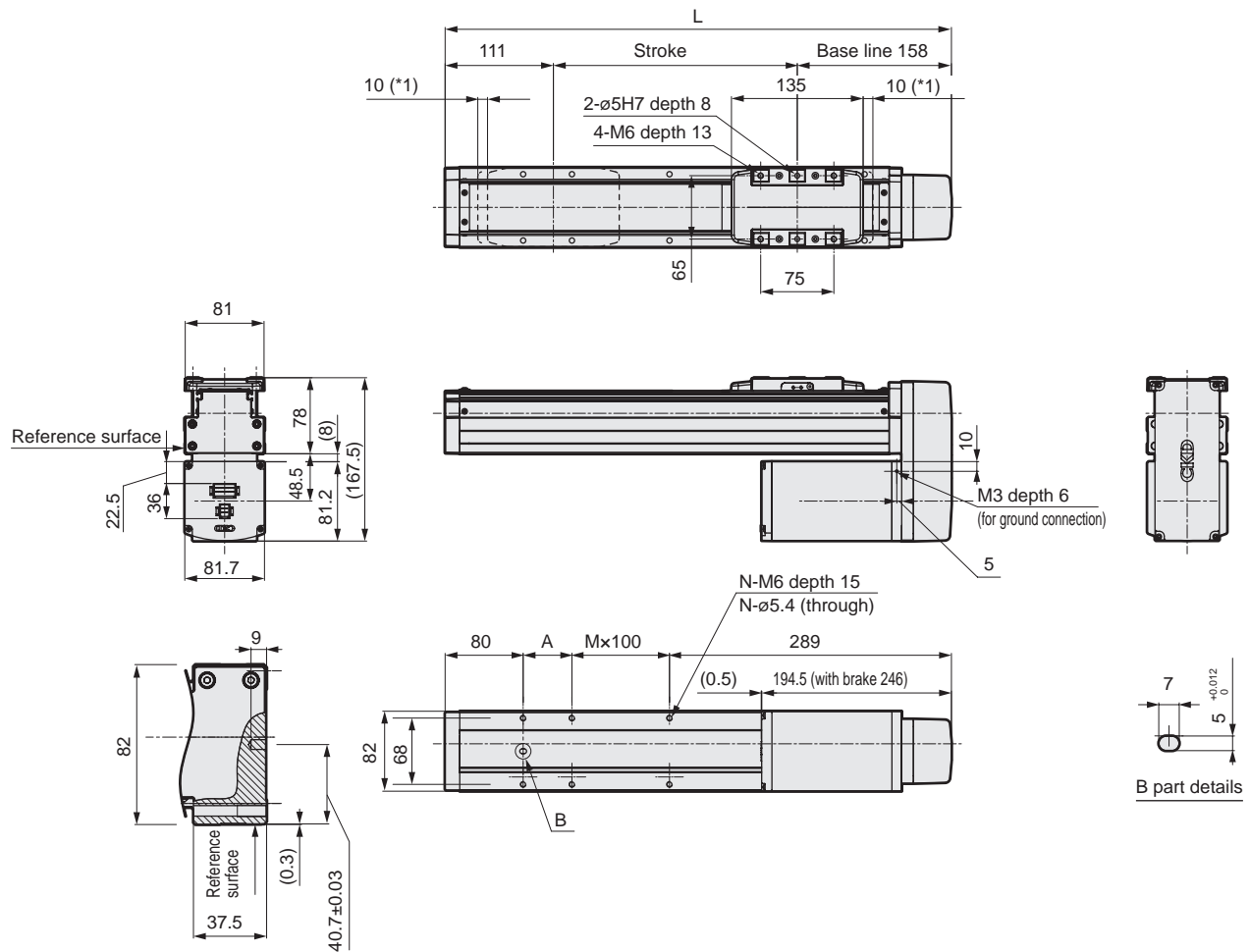
Model selection  
Technical data

ECG-A

Safety  
precautions

### Dimensions Bottom motor mounting

#### ● EJSG-08D



\*1: Operating range to the mechanical stopper

Stroke code	0250	0300	0350	0400	0450	0500	0550	0600	0650	0700	0750	0800	0850	0900	0950	1000	
Stroke (mm)	250	300	350	400	450	500	550	600	650	700	750	800	850	900	950	1000	
L	519	569	619	669	719	769	819	869	919	969	1019	1069	1119	1169	1219	1269	
A	50	100	50	100	50	100	50	100	50	100	50	100	50	100	50	100	
M	1	1	2	2	3	3	4	4	5	5	6	6	7	7	8	8	
N	6	6	8	8	10	10	12	12	14	14	16	16	18	18	20	20	
Weight (kg)	Without brake	7.2	7.6	7.9	8.2	8.6	8.9	9.2	9.6	9.9	10.2	10.6	10.9	11.3	11.6	11.9	12.3
	With brake	8.3	8.6	8.9	9.3	9.6	9.9	10.3	10.6	10.9	11.3	11.6	12.0	12.3	12.6	13.0	13.3

Stroke code	1050	1100	
Stroke (mm)	1050	1100	
L	1319	1369	
A	50	100	
M	9	9	
N	22	22	
Weight (kg)	Without brake	12.6	12.9
	With brake	13.6	14.0

EJSG

EJSG-G

EJSG-C

EJSG-P4

EJSG-FP1

Model selection  
Technical data

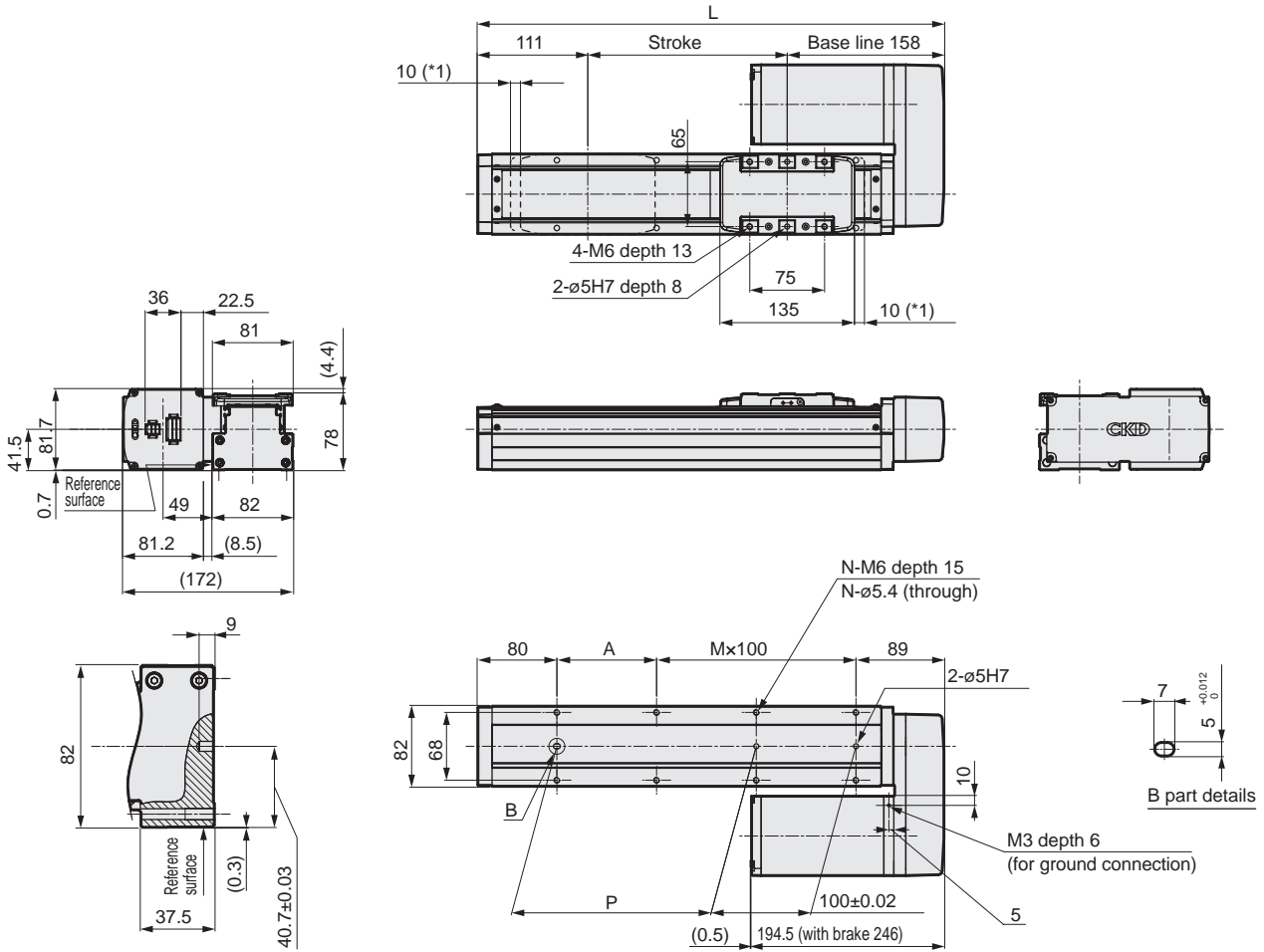
ECG-A

Safety  
precautions

# EJSG-08\*

## Dimensions Left motor mounting

### ● EJSG-08L



\*1: Operating range to the mechanical stopper

Stroke code		0050	0100	0150	0200	0250	0300	0350	0400	0450	0500	0550	0600	0650	0700	0750	0800
Stroke (mm)		50	100	150	200	250	300	350	400	450	500	550	600	650	700	750	800
L		319	369	419	469	519	569	619	669	719	769	819	869	919	969	1019	1069
A		150	100	50	100	50	100	50	100	50	100	50	100	50	100	50	100
M		0	1	2	2	3	3	4	4	5	5	6	6	7	7	8	8
N		4	6	8	8	10	10	12	12	14	14	16	16	18	18	20	20
P		50	100	150	200	250	300	350	400	450	500	550	600	650	700	750	800
Weight (kg)	Without brake	5.9	6.2	6.6	6.9	7.2	7.6	7.9	8.2	8.6	8.9	9.2	9.6	9.9	10.2	10.6	10.9
	With brake	6.9	7.3	7.6	7.9	8.3	8.6	8.9	9.3	9.6	9.9	10.3	10.6	10.9	11.3	11.6	12.0

Stroke code		0850	0900	0950	1000	1050	1100
Stroke (mm)		850	900	950	1000	1050	1100
L		1119	1169	1219	1269	1319	1369
A		50	100	50	100	50	100
M		9	9	10	10	11	11
N		22	22	24	24	26	26
P		850	900	950	1000	1050	1100
Weight (kg)	Without brake	11.3	11.6	11.9	12.3	12.6	12.9
	With brake	12.3	12.6	13.0	13.3	13.6	14.0

Model selection  
Technical data

ECG-A

Safety  
precautions

Notes

EJSG

EJSG-G

EJSG-C

EJSG-P4

EJSG-FP1

Model selection  
Technical data

ECG-A

Safety  
precautions

Safety precautions

ECG-A

Model selection  
Technical data

EJSG-FP1

EJSG-P4

EJSG-C

EJSG-G

EJSG

# EJSG-G

Slider dust-proof specifications



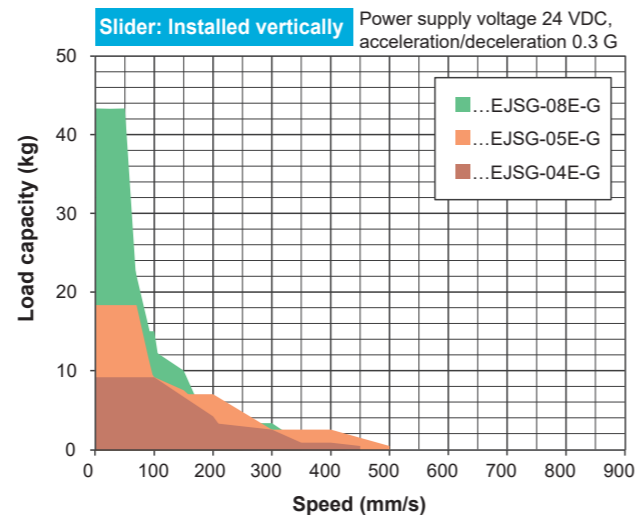
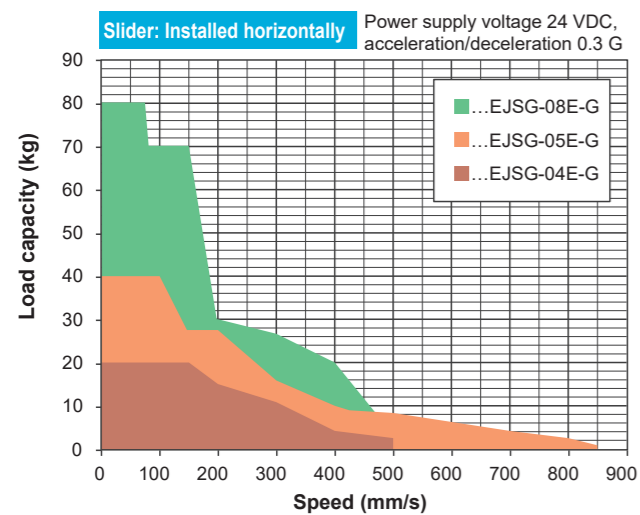
## CONTENTS

Product introduction	Intro
Series variation	38
<hr/>	
● Specifications/How to order/Dimensions	
• EJSG-04*-G	40
• EJSG-05*-G	44
• EJSG-08*-G	48
● Model selection	108
● Technical data	110
<hr/>	
⚠ Safety precautions	132
Model Selection Check Sheet	140

Series variation

Controller	Actuator Model No.	Motor Size	Motor Mounting Direction	Body width (mm)	Screw lead (mm)	Max. load capacity (kg)		Max. Pressing force (N)	Stroke (mm) and max. speed (mm/s)																Listed page								
						Horizontal	Vertical		50 mm	100	150	200	250	300	350	400	450	500	550	600	650	700	750	800		850	900	950	1000	1050	1100	1150	1200
									mm/s																								
EJSG-G	EJSG-04E06-G	□ 35	Straight	44	6	20.0	9.2	155	320 mm/s																40								
	EJSG-04E12-G								500																								
	EJSG-04R/D/L06-G								250																								
	EJSG-04R/D/L12-G								400																								
EJSG-G	EJSG-05E05-G	□ 42	Straight	54	5	40.0	14.0	220	290																44								
	EJSG-05E10-G								500																								
	EJSG-05E20-G								850																								
	Left/Right/Bottom		EJSG-05R/D/L05-G	250																46													
			EJSG-05R/D/L10-G	400																													
			EJSG-05R/D/L20-G	700																													
ECG Series	EJSG-08E05-G	□ 56	Straight	82	5	80.0	43.3	965	150																48								
	EJSG-08E10-G								250																								
	EJSG-08E20-G								500																								
	Left/Right/Bottom		EJSG-08R/D/L05-G	125																50													
			EJSG-08R/D/L10-G	250																													
			EJSG-08R/D/L20-G	400																													

\* This data is obtained at a power supply voltage of 24 VDC and acceleration/deceleration of 0.3G.  
 \* The load capacity when wall mounted is the same as for horizontal installation.





Electric actuator Slider Dust-proof

# EJSG-04E-G

Straight motor mounting

35 Stepping motor



## How to order

**EJSG - 04 E 06 0300 N B N - V C S03 - G**

<b>1</b> Body size	<b>2</b> Motor mounting direction	<b>3</b> Screw lead	<b>4</b> Stroke	<b>5</b> Brake *2	<b>6</b> Encoder	<b>7</b> Fitting	<b>8</b> Relay cable *3
04 Body width 44mm	E Straight mounting	06 6 mm 12 12 mm	0050 to 0800 50 mm (In 50 mm increments) 800 mm	N None B Yes	B Battery-less absolute encoder C Incremental encoder	V Yes	N00 None S01 Fixed cable 1 m S03 Fixed cable 3 m S05 Fixed cable 5 m S10 Fixed cable 10 m R01 Movable cable 1 m R03 Movable cable 3 m R05 Movable cable 5 m R10 Movable cable 10 m

- \*1 Select the controller from page 117.
- \*2 When using vertically, select "Yes".
- \*3 Refer to page 128 for relay cable dimensions.
- \*4 When the product is shipped, the actuator body is attached with parts for connector protection.

## Specifications

Supported controllers	ECG-A	
Motor	<input type="checkbox"/> 35 Stepping motor	
Encoder type	Battery-less absolute encoder Incremental encoder	
Drive method	Ball screw ø10	
Stroke mm	50 to 800	
Screw lead mm	6	12
Max. workload kg *1	Horizontal	20.0
	Vertical	9.2
Operation speed range *2 mm/s	7 to 320	15 to 500
Max. acceleration/ deceleration G	Horizontal	0.7
	Vertical	0.3
Maximum pushing force N	155	77
Pressing operation speed range mm/s	5 to 20	5 to 20
Repeatability mm	±0.01	
Lost motion mm	0.1 or less	
Static allowable moment N·m	MP:62 MY:62 MR:92	
Motor power supply voltage	24 VDC ±10%	
Motor section max. instantaneous current A	2.4	
Brake	Model, power supply voltage	Non-excitation operation, 24 VDC ±10%
	Power consumption W	6.1
	Holding force N	140
Insulation resistance	10 MΩ, 500 VDC	
Withstand voltage	500 VAC for 1 minute	
Operating ambient temperature, humidity	10 to 40 °C (no freezing) 35 to 80% RH (no condensation)	
Storage ambient temperature, humidity	-10 to 50 °C (no freezing) 35 to 80% RH (no condensation)	
Atmosphere	No corrosive gas or explosive gas	
Degree of protection	IP50	

\*1 Load capacity varies according to acceleration/deceleration and speed. Refer to page 41 for details.  
\*2 The maximum speed may decrease depending on the conditions.

## Stroke and max. speed

Thread Lead	Stroke (mm/s)					
	50 to 550	600	650	700	750	800
6	320	290	250	220	190	170
12	500	500	500	440	390	340

## Speed and load capacity

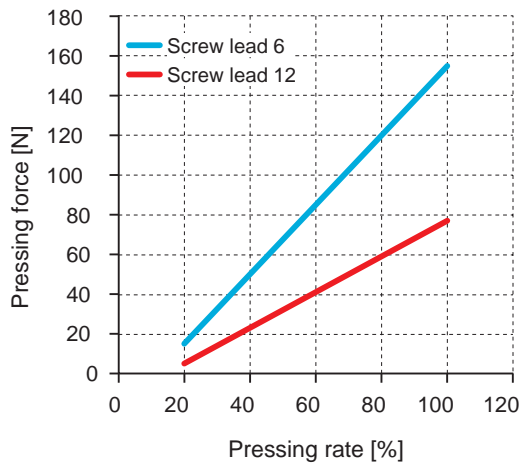
[When installed horizontally]

Speed (mm/s)	Acceleration/deceleration (G)			
	0.3		0.7	
	Screw lead (mm)			
	6	12	6	12
7	20.0		20.0	
15	20.0	15.0	20.0	15.0
50	20.0	15.0	20.0	15.0
100	20.0	15.0	20.0	15.0
150	20.0	15.0	12.5	10.8
200	15.0	15.0	12.5	10.8
250	11.7	10.8	11.7	8.3
300	7.5	10.8	7.5	8.3
320	7.5	4.2	7.5	4.2
400		4.2		4.2
500		2.5		2.5

[When installed vertically]

Speed (mm/s)	Acceleration/deceleration (G)	
	0.3	
	Screw lead (mm)	
	6	12
7	9.2	
15	9.2	3.3
50	9.2	3.3
100	9.2	3.3
150	6.7	3.3
200	4.2	3.3
225	1.7	2.5
250	1.7	2.5
275	0.4	2.5
300		2.5
350		0.8
400		0.8
450		0.4

## Pressing force

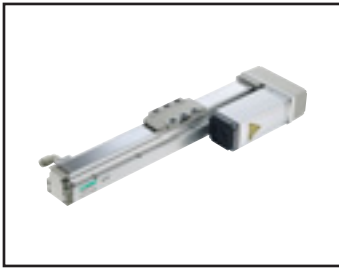


\*The above pressing force is a reference value. Variation may occur according to conditions such as pressing speed.

## Dimensions

Refer to page 8 for actuator dimensions.

Refer to page 52 for fitting dimensions.



Electric actuator Slider Dust-proof

# EJSG-04\*-G

Motor side mounting (left, right, bottom)

35 Stepping motor



## How to order

**EJSG - 04 R 06 0300 N B N - V C S03 - G**

<b>1</b> Body size 04 Body width 44mm	<b>2</b> Motor mounting direction*2*3 R Right mounting D Bottom mounting L Left mounting	<b>3</b> Screw lead 06 6 mm 12 12 mm	<b>4</b> Stroke *2*3 0050 to 0800 50 mm (In 50 mm increments) 800 mm	<b>5</b> Brake *4 N None B Yes	<b>6</b> Encoder B Battery-less absolute encoder C Incremental encoder	<b>7</b> Fitting *3 V Yes	<b>8</b> Relay cable *5 N00 None S01 Fixed cable 1 m S03 Fixed cable 3 m S05 Fixed cable 5 m S10 Fixed cable 10 m R01 Movable cable 1 m R03 Movable cable 3 m R05 Movable cable 5 m R10 Movable cable 10 m
--	---	--	---	--------------------------------------	--	------------------------------	---

- \*1 Select the controller from page 117.
- \*2 When the motor mounting direction "D" is selected, the stroke is selected from "0250 (250 mm)" to "800 (800 mm)".
- \*3 For the motor mounting direction "L" and with fitting "V", stroke 0050 (50 mm) cannot be selected.
- \*4 When using vertically, select "Yes".
- \*5 Refer to page 128 for relay cable dimensions.
- \*6 When the product is shipped, the actuator body is attached with the protective parts for the connector.

## Specifications

Supported controllers	ECG-A		
Motor	<input type="checkbox"/> 35 Stepping motor		
Encoder type	Battery-less absolute encoder Incremental encoder		
Drive method	Ball screw ø10		
Stroke mm	50 to 800		
Screw lead mm	6	12	
Max. workload kg *1	Horizontal	20.0	
	Vertical	9.2	
Operation speed range *2 mm/s	7 to 250	15 to 400	
Max. acceleration/ deceleration G	Horizontal	0.7	
	Vertical	0.3	
Maximum pushing force N	155	77	
Pressing operation speed rangemm/s	5 to 20	5 to 20	
Repeatability mm	±0.01		
Lost motion mm	0.1 or less		
Static allowable moment N·m	MP:62 MY:62 MR:92		
Motor power supply voltage	24 VDC ±10%		
Motor section max. instantaneous current A	2.4		
Brake	Model, power supply voltage	Non-excitation operation, 24 VDC ±10%	
	Power consumption W	6.1	
	Holding force N	140	70
Insulation resistance	10 MΩ, 500 VDC		
Withstand voltage	500 VAC for 1 minute		
Operating ambient temperature, humidity	10 to 40 °C (no freezing) 35 to 80% RH (no condensation)		
	-10 to 50°C (no freezing) 35 to 80% RH (no condensation)		
Storage ambient temperature, humidity	-10 to 50°C (no freezing) 35 to 80% RH (no condensation)		
Atmosphere	No corrosive gas or explosive gas		
Degree of protection	IP50		

\*1 Load capacity varies according to acceleration/deceleration and speed. Refer to page 43 for details.  
\*2 The maximum speed may decrease depending on the conditions.

### Stroke and max. speed

Thread Lead	Stroke (mm/s)			
	50 to 650	700	750	800
6	250	220	190	170
12	400	400	390	340

### Speed and load capacity

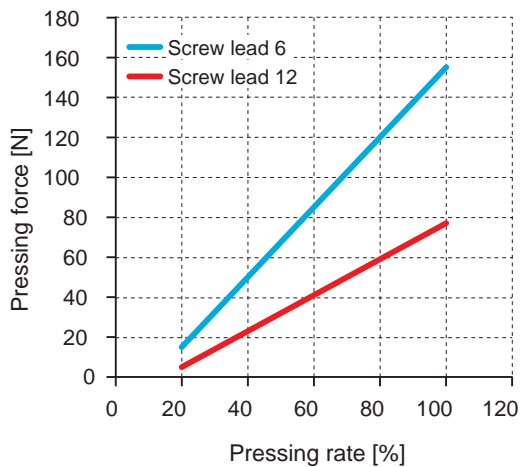
[When installed horizontally]

Speed (mm/s)	Acceleration/deceleration (G)			
	0.3		0.7	
	Screw lead (mm)			
	6	12	6	12
7	20.0		20.0	
15	20.0	11.7	20.0	10.0
50	20.0	11.7	20.0	10.0
100	20.0	11.7	20.0	10.0
150	13.3	11.7	11.7	10.0
200	13.3	11.7	10.0	10.0
250	10.0	8.3	8.3	8.3
300		8.3		8.3
400		3.3		3.3

[When installed vertically]

Speed (mm/s)	Acceleration/deceleration (G)	
	0.3	
	Screw lead (mm)	
	6	12
0	9.2	
15	9.2	3.3
50	9.2	3.3
100	6.7	3.3
150	3.3	3.3
200	2.5	3.3
225	0.8	1.7
300		1.7
350		0.8

### Pressing force

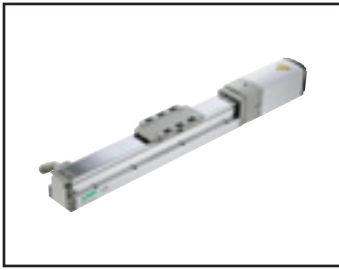


\*The above pressing force is a reference value. Variation may occur according to conditions such as pressing speed.

### Dimensions

Refer to pages 12 to 14 for actuator dimensions.

Refer to page 52 for fitting dimensions.



# Electric actuator Slider Dust-proof EJSG-05E-G

## Straight motor mounting

42 Stepper motor



### How to order

**EJSG - 05 E 05 0300 N B N - V C S03 - G**

<b>1</b> Body size 05 Body width 54mm	<b>2</b> Motor mounting direction E Straight mounting	<b>3</b> Screw lead 05 5 mm 10 10 mm 20 20 mm	<b>4</b> Stroke 0050 to 0800 50 mm (In 50 mm increments) 800 mm	<b>5</b> Brake *2 N None B Yes	<b>6</b> Encoder B Battery-less absolute encoder C Incremental encoder	<b>7</b> Fitting V Yes	<b>8</b> Relay cable *3 N00 None S01 Fixed cable 1 m S03 Fixed cable 3 m S05 Fixed cable 5 m S10 Fixed cable 10 m R01 Movable cable 1 m R03 Movable cable 3 m R05 Movable cable 5 m R10 Movable cable 10 m
--	--	--	--	--------------------------------------	--	---------------------------	---

\*1 Select the controller from page 117.

\*2 When using vertically, select "Yes".

\*3 Refer to page 128 for relay cable dimensions.

\*4 When the product is shipped, the actuator body is attached with parts for connector protection.

### Specifications

Supported controllers	ECG-A			
Motor	<input type="checkbox"/> 42 Stepper motor			
Encoder type	Battery-less absolute encoder Incremental encoder			
Drive method	Ball screw ø12			
Stroke mm	50 to 800			
Screw lead mm	5	10	20	
Max. workload kg *1	Horizontal	40.0	27.5	18.3
	Vertical	14.0	7.0	2.5
Operation speed range *2 mm/s	6 to 290	12 to 500	25 to 850	
Max. acceleration/ deceleration G	Horizontal	0.7	0.7	0.7
	Vertical	0.3	0.3	0.3
Maximum pushing force N	220	110	55	
Pressing operation speed rangemm/s	5 to 20	5 to 20	5 to 20	
Repeatability mm	±0.01			
Lost motion mm	0.1 or less			
Static allowable moment N·m	MP:103 MY:103 MR:144			
Motor power supply voltage	24 VDC ±10%			
Motor section max. instantaneous current A	2.7			
Brake	Model, power supply voltage	Non-excitation operation, 24 VDC ±10%		
	Power consumption W	6.1		
	Holding force N	168	84	42
Insulation resistance	10 MΩ, 500 VDC			
Withstand voltage	500 VAC for 1 minute			
Operating ambient temperature, humidity	10 to 40 °C (no freezing) 35 to 80% RH (no condensation)			
Storage ambient temperature, humidity	-10 to 50°C (no freezing) 35 to 80% RH (no condensation)			
Atmosphere	No corrosive gas or explosive gas			
Degree of protection	IP50			

\*1 Load capacity varies according to acceleration/deceleration and speed. Refer to page 45 for details.

\*2 The maximum speed may decrease depending on the conditions.

### Stroke and max. speed

Thread Lead	Stroke (mm/s)					
	50 to 550	600	650	700	750	800
5	290	260	225	200	175	150
10	500	500	455	400	355	315
20	850	850	850	800	710	630

### Speed and load capacity

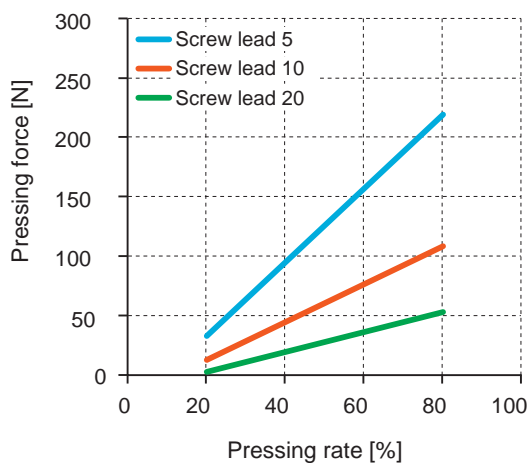
[When installed horizontally]

Speed (mm/s)	Acceleration/deceleration (G)					
	0.3			0.7		
	Screw lead (mm)					
	5	10	20	5	10	20
6	40.0			40.0		
12	40.0	27.5		40.0	27.5	
25	40.0	27.5	18.3	40.0	27.5	8.3
50	40.0	27.5	18.3	40.0	27.5	8.3
100	40.0	27.5	18.3	40.0	27.5	8.3
150	26.7	27.5	10.0	26.7	27.5	6.7
200	26.7	27.5	10.0	26.7	27.5	6.7
250	26.7	15.8	10.0	26.7	12.5	6.7
290	26.7	15.8	10.0	15.8	12.5	6.7
300		15.8	10.0		12.5	6.7
400		10.0	8.3		9.2	5.0
500		5.8	8.3		2.5	5.0
700			4.2			2.5
800			2.5			1.7
850			0.8			0.4

[When installed vertically]

Speed (mm/s)	Acceleration/deceleration (G)		
	0.3		
	Screw lead (mm)		
	5	10	20
6	14.0		
12	14.0	7.0	
25	14.0	7.0	2.5
50	14.0	7.0	2.5
100	9.2	7.0	2.5
150	7.5	7.0	2.5
200	4.2	7.0	2.5
210	3.3	2.5	2.5
225	3.3	2.5	2.5
250	2.1	2.5	2.5
300		2.5	2.5
325		2.1	2.5
350		2.1	2.5
400		1.3	2.5
425		0.8	0.4
500			0.4

### Pressing force

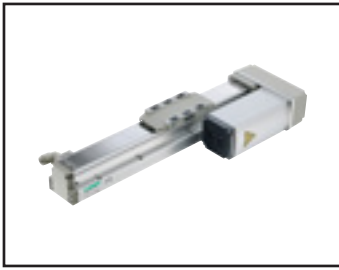


\*The above pressing force is a reference value. Variation may occur according to conditions such as pressing speed.

### Dimensions

Refer to page 18 for actuator dimensions.

Refer to page 52 for fitting dimensions.



Electric actuator Slider Dust-proof

# EJSG-05\*-G

Motor side mounting (left, right, bottom)

42 Stepper motor



## How to order

**EJSG - 05 R 05 0300 N B N - V C S03 - G**

<b>1</b> Body size 05 Body width 54mm	<b>2</b> Motor mounting direction*2*3 R Right mounting D Bottom mounting L Left mounting	<b>3</b> Screw lead 05 5 mm 10 10 mm 20 20 mm	<b>4</b> Stroke *2*3 0050 to 0800 50 mm (In 50 mm increments) 800 mm	<b>5</b> Brake *4 N None B Yes	<b>6</b> Encoder B Battery-less absolute encoder C Incremental encoder	<b>7</b> Fitting *3 V Yes	<b>8</b> Relay cable *5 N00 None S01 Fixed cable 1 m S03 Fixed cable 3 m S05 Fixed cable 5 m S10 Fixed cable 10 m R01 Movable cable 1 m R03 Movable cable 3 m R05 Movable cable 5 m R10 Movable cable 10 m
--	---	--	---	--------------------------------------	--	------------------------------	---

\*1 Select the controller from page 117.  
 \*2 When the motor mounting direction "D" is selected, the stroke is selected from "0250 (250 mm)" to "0800 (800 mm)".  
 \*3 For the motor mounting direction "L", 0050 (50 mm) stroke cannot be selected.  
 \*4 When using vertically, select "Yes".  
 \*5 Refer to page 128 for relay cable dimensions.  
 \*6 When the product is shipped, the actuator body is attached with parts for connector protection.

## Specifications

Supported controllers	ECG-A		
Motor	<input type="checkbox"/> 42 Stepper motor		
Encoder type	Battery-less absolute encoder Incremental encoder		
Drive method	Ball screw ø15		
Stroke mm	50 to 800		
Screw lead mm	5	10	20
Max. workload kg *1	Horizontal	40.0	27.5
	Vertical	10.0	3.3
Operation speed range *2 mm/s	6 to 250	12 to 400	25 to 700
Max. acceleration/ deceleration G	Horizontal	0.7	0.7
	Vertical	0.3	0.3
Maximum pushing force N	220	110	55
Pressing operation speed rangemm/s	5 to 20	5 to 20	5 to 20
Repeatability mm	±0.01		
Lost motion mm	0.1 or less		
Static allowable moment N·m	MP:103 MY:103 MR:144		
Motor power supply voltage	24 VDC ±10%		
Motor section max. instantaneous current A	2.7		
Brake	Model, power supply voltage	Non-excitation operation, 24 VDC ±10%	
	Power consumption W	6.1	
	Holding force N	168	84
Insulation resistance	10 MΩ, 500 VDC		
Withstand voltage	500 VAC for 1 minute		
Operating ambient temperature, humidity	10 to 40 °C (no freezing) 35 to 80% RH (no condensation)		
	-10 to 50 °C (no freezing) 35 to 80% RH (no condensation)		
Storage ambient temperature, humidity	-10 to 50 °C (no freezing) 35 to 80% RH (no condensation)		
Atmosphere	No corrosive gas or explosive gas		
Degree of protection	IP50		

\*1 Load capacity varies according to acceleration/deceleration and speed. Refer to page 47 for details.  
 \*2 The maximum speed may decrease depending on the conditions.

### Stroke and max. speed

Thread Lead	Stroke (mm/s)				
	50 to 600	650	700	750	800
5	250	225	200	175	150
10	400	400	400	355	315
20	700	700	700	700	630

### Speed and load capacity

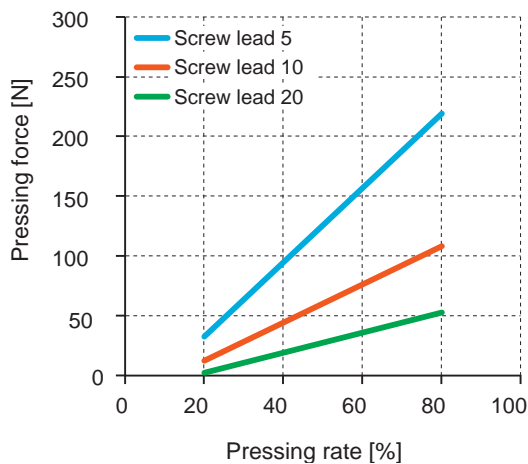
[When installed horizontally]

Speed (mm/s)	Acceleration/deceleration (G)					
	0.3			0.7		
	Screw lead (mm)					
	5	10	20	5	10	20
6	40.0			40.0		
12	40.0	27.5		40.0	27.5	
25	40.0	27.5	18.3	40.0	27.5	7.5
50	40.0	27.5	18.3	40.0	27.5	7.5
100	40.0	27.5	18.3	40.0	27.5	7.5
150	26.7	23.3	10.0	26.7	20.0	5.0
200	26.7	23.3	10.0	26.7	20.0	5.0
250	8.3	11.7	10.0	8.3	11.7	5.0
300		11.7	10.0		11.7	5.0
400		3.3	6.7		3.3	4.2
500			6.7			4.2
700			3.3			1.7

[When installed vertically]

Speed (mm/s)	Acceleration/deceleration (G)		
	0.3		
	Screw lead (mm)		
	5	10	20
6	10.0		
12	10.0	3.3	
25	10.0	3.3	0.8
50	10.0	3.3	0.8
100	8.3	3.3	0.8
150	6.7	2.1	0.8
200	2.5	2.1	0.8
210	0.8	1.3	0.8
300		1.3	0.8
325		0.4	0.8
400			0.8
500			0.4

### Pressing force



\*The above pressing force is a reference value. Variation may occur according to conditions such as pressing speed.

### Dimensions

Refer to pages 22 to 24 for actuator dimensions.

Refer to page 52 for fitting dimensions.



# Electric actuator Slider Dust-proof EJSG-08E-G

## Straight motor mounting

56 Stepping motor



### How to order

**EJSG - 08 E 05 0300 N B N - V C S03 - G**

<b>1 Body size</b>	<b>08</b> Body width 82mm
<b>2 Motor mounting direction</b>	<b>E</b> Straight mounting
<b>3 Screw lead</b>	<b>05</b> 5 mm <b>10</b> 10 mm <b>20</b> 20 mm
<b>4 Stroke</b>	<b>0050 to 1100</b> 50 mm (In 50 mm increments) 1100 mm
<b>5 Brake</b> *2	<b>N</b> None <b>B</b> Yes
<b>6 Encoder</b>	<b>B</b> Battery-less absolute encoder <b>C</b> Incremental encoder
<b>7 Fitting</b>	<b>V</b> Yes
<b>8 Relay cable</b> *3	<b>N00</b> None <b>S01</b> Fixed cable 1 m <b>S03</b> Fixed cable 3 m <b>S05</b> Fixed cable 5 m <b>S10</b> Fixed cable 10 m <b>R01</b> Movable cable 1 m <b>R03</b> Movable cable 3 m <b>R05</b> Movable cable 5 m <b>R10</b> Movable cable 10 m

\*1 Select the controller from page 117.

\*2 When using vertically, select "Yes".

\*3 Refer to page 128 for relay cable dimensions.

\*4 When the product is shipped, the actuator body is attached with the protective parts for the connector.

### Specifications

Supported controllers	ECG-A		
Motor	<input type="checkbox"/> 56 Stepping motor		
Encoder type	Battery-less absolute encoder Incremental encoder		
Drive method	Ball screw ø15		
Stroke mm	50 to 1100		
Screw lead mm	5	10	20
Max. workload kg *1	Horizontal	80.0	70.0
	Vertical	43.3	28.3
Operation speed range *2 mm/s	6 to 150	12 to 250	25 to 500
Max. acceleration/ deceleration G	Horizontal	0.7	0.7
	Vertical	0.3	0.3
Maximum pushing force N	965	482	241
Pressing operation speed rangemm/s	5 to 20	5 to 20	5 to 20
Repeatability mm	±0.01		
Lost motion mm	0.1 or less		
Static allowable moment N·m	MP:203 MY:203 MR:336		
Motor power supply voltage	24 VDC ±10%		
Motor section max. instantaneous current A	4.0		
Brake	Model, power supply voltage	Non-excitation operation, 24 VDC ±10%	
	Power consumption W	7.2	
	Holding force N	768	384
Insulation resistance	10 MΩ, 500 VDC		
Withstand voltage	500 VAC for 1 minute		
Operating ambient temperature, humidity	10 to 40 °C (no freezing) 35 to 80% RH (no condensation)		
Storage ambient temperature, humidity	-10 to 50°C (no freezing) 35 to 80% RH (no condensation)		
Atmosphere	No corrosive gas or explosive gas		
Degree of protection	IP50		

\*1 Load capacity varies according to acceleration/deceleration and speed. Refer to page 49 for details.

\*2 The maximum speed may decrease depending on the conditions.

### Stroke and max. speed

Thread Lead	Stroke (mm/s)				
	50 to 900	950	1000	1050	1100
5	150	145	130	120	110
10	250	250	250	240	220
20	500	500	500	480	440

### Speed and load capacity

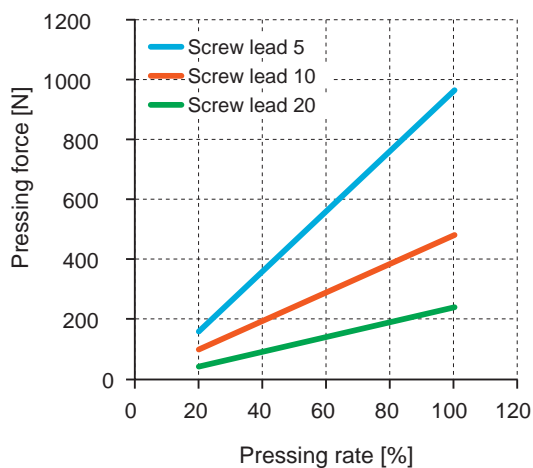
[When installed horizontally]

Speed (mm/s)	Acceleration/deceleration (G)					
	0.3			0.7		
	Screw lead (mm)					
	5	10	20	5	10	20
6	80.0			80.0		
12	80.0	70.0		80.0	70.0	
25	80.0	70.0	30.0	80.0	70.0	26.7
50	80.0	70.0	30.0	80.0	70.0	26.7
75	80.0	70.0	30.0	80.0	70.0	26.7
100	40.0	70.0	30.0	40.0	70.0	26.7
125	40.0	70.0	30.0	40.0	70.0	18.3
150	40.0	70.0	30.0	35.0	70.0	18.3
200		28.3	30.0		17.5	18.3
250		28.3	26.7		17.5	18.3
300			26.7			18.3
400			20.0			11.7
500			3.3			

[When installed vertically]

Speed (mm/s)	Acceleration/deceleration (G)		
	0.3		
	Screw lead (mm)		
	5	10	20
6	43.3		
12	43.3	28.3	
25	43.3	28.3	3.3
50	43.3	28.3	3.3
75	15.0	12.5	3.3
100	15.0	12.5	3.3
125	2.9	10.0	3.3
150	2.9	10.0	3.3
200		1.7	3.3
250		1.7	3.3
300			3.3
350			0.8

### Pressing force

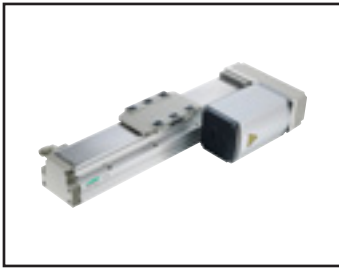


\*The above pressing force is a reference value. Variation may occur according to conditions such as pressing speed.

### Dimensions

Refer to page 28 for actuator dimensions.

Refer to page 52 for fitting dimensions.



Electric actuator Slider Dust-proof

# EJSG-08\*-G

Motor side mounting (left, right, bottom)

56 Stepping motor



## How to order

**EJSG - 08 R 05 0300 N B N - V C S03 - G**

<b>1 Body size</b>	<b>08</b> Body width 82mm																		
<b>2 Motor mounting direction*2</b>	<table border="1"> <tr><td>R</td><td>Right mounting</td></tr> <tr><td>D</td><td>Bottom mounting</td></tr> <tr><td>L</td><td>Left mounting</td></tr> </table>	R	Right mounting	D	Bottom mounting	L	Left mounting												
R	Right mounting																		
D	Bottom mounting																		
L	Left mounting																		
<b>3 Screw lead</b>	<table border="1"> <tr><td>05</td><td>5 mm</td></tr> <tr><td>10</td><td>10 mm</td></tr> <tr><td>20</td><td>20 mm</td></tr> </table>	05	5 mm	10	10 mm	20	20 mm												
05	5 mm																		
10	10 mm																		
20	20 mm																		
<b>4 Stroke</b> *2	<table border="1"> <tr><td>0050 to 1100</td><td>50 mm (In 50 mm increments) 1100 mm</td></tr> </table>	0050 to 1100	50 mm (In 50 mm increments) 1100 mm																
0050 to 1100	50 mm (In 50 mm increments) 1100 mm																		
<b>5 Brake</b> *3	<table border="1"> <tr><td>N</td><td>None</td></tr> <tr><td>B</td><td>Yes</td></tr> </table>	N	None	B	Yes														
N	None																		
B	Yes																		
<b>6 Encoder</b>	<table border="1"> <tr><td>B</td><td>Battery-less absolute encoder</td></tr> <tr><td>C</td><td>Incremental encoder</td></tr> </table>	B	Battery-less absolute encoder	C	Incremental encoder														
B	Battery-less absolute encoder																		
C	Incremental encoder																		
<b>7 Fitting</b>	<table border="1"> <tr><td>V</td><td>Yes</td></tr> </table>	V	Yes																
V	Yes																		
<b>8 Relay cable</b> *4	<table border="1"> <tr><td>N00</td><td>None</td></tr> <tr><td>S01</td><td>Fixed cable 1 m</td></tr> <tr><td>S03</td><td>Fixed cable 3 m</td></tr> <tr><td>S05</td><td>Fixed cable 5 m</td></tr> <tr><td>S10</td><td>Fixed cable 10 m</td></tr> <tr><td>R01</td><td>Movable cable 1 m</td></tr> <tr><td>R03</td><td>Movable cable 3 m</td></tr> <tr><td>R05</td><td>Movable cable 5 m</td></tr> <tr><td>R10</td><td>Movable cable 10 m</td></tr> </table>	N00	None	S01	Fixed cable 1 m	S03	Fixed cable 3 m	S05	Fixed cable 5 m	S10	Fixed cable 10 m	R01	Movable cable 1 m	R03	Movable cable 3 m	R05	Movable cable 5 m	R10	Movable cable 10 m
N00	None																		
S01	Fixed cable 1 m																		
S03	Fixed cable 3 m																		
S05	Fixed cable 5 m																		
S10	Fixed cable 10 m																		
R01	Movable cable 1 m																		
R03	Movable cable 3 m																		
R05	Movable cable 5 m																		
R10	Movable cable 10 m																		

\*1 Select the controller from page 117.

\*2 Motor mounting direction "D" If you select, the stroke is "0250 (250 mm)" to "1100(1100mm)" is the selection.

\*3 When using vertically, select "Yes".

\*4 Refer to page 128 for relay cable dimensions.

\*5 When the product is shipped, the actuator body is supplied with protective parts for the connector.

## Specifications

Supported controllers	ECG-A		
Motor	<input type="checkbox"/> 56 Stepping motor		
Encoder type	Battery-less absolute encoder Incremental encoder		
Drive method	Ball screw ø15		
Stroke mm	50 to 1100		
Screw lead mm	5	10	20
Max. workload kg *1	Horizontal	80.0	70.0
	Vertical	33.3	18.3
Operation speed range *2 mm/s	6 to 125	12 to 250	25 to 400
Max. acceleration/ deceleration G	Horizontal	0.7	0.7
	Vertical	0.3	0.3
Maximum pushing force N	965	482	241
Pressing operation speed rangemm/s	5 to 20	5 to 20	5 to 20
Repeatability mm	±0.01		
Lost motion mm	0.1 or less		
Static allowable moment N·m	MP:203 MY:203 MR:336		
Motor power supply voltage	24 VDC ±10%		
Motor section max. instantaneous current A	4.0		
Brake	Model, power supply voltage	Non-excitation operation, 24 VDC ±10%	
	Power consumption W	7.2	
	Holding force N	768	384
Insulation resistance	10 MΩ, 500 VDC		
Withstand voltage	500 VAC for 1 minute		
Operating ambient temperature, humidity	10 to 40 °C (no freezing)		
	35 to 80% RH (no condensation)		
Storage ambient temperature, humidity	-10 to 50°C (no freezing)		
	35 to 80% RH (no condensation)		
Atmosphere	No corrosive gas or explosive gas		
Degree of protection	IP50		

\*1 Load capacity varies according to acceleration/deceleration and speed. Refer to page 51 for details.

\*2 The maximum speed may decrease depending on the conditions.

### Stroke and max. speed

Thread Lead	Stroke (mm/s)		
	50 to 1000	1050	1100
5	125	120	110
10	250	240	220
20	400	400	400

### Speed and load capacity

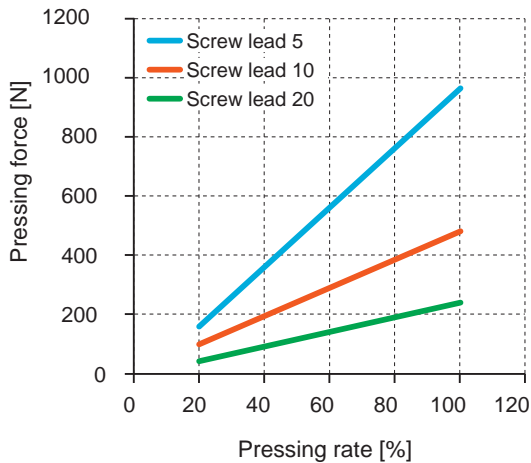
[When installed horizontally]

Speed (mm/s)	Acceleration/deceleration (G)					
	0.3			0.7		
	Screw lead (mm)					
	5	10	20	5	10	20
6	80.0			80.0		
12	80.0	70.0		80.0	70.0	
25	80.0	70.0	30.0	80.0	70.0	26.7
50	80.0	70.0	30.0	80.0	70.0	26.7
75	68.3	70.0	30.0	68.3	70.0	26.7
100	40.0	70.0	30.0	40.0	70.0	26.7
125	40.0	70.0	30.0	40.0	30.0	18.3
150		70.0	30.0		30.0	18.3
200		28.3	30.0		17.5	18.3
250		21.7	6.7		17.5	6.7
300			6.7			6.7
400			3.3			3.3

[When installed vertically]

Speed (mm/s)	Acceleration/deceleration (G)		
	0.3		
	Screw lead (mm)		
	5	10	20
6	33.3		
12	33.3	18.3	
25	33.3	18.3	3.3
50	25.0	18.3	3.3
75	15.0	12.5	3.3
100	12.5	12.5	3.3
125	2.9	8.3	3.3
150		8.3	3.3
200		1.7	3.3
250			3.3
300			3.3
350			0.8

### Pressing force



\*The above pressing force is a reference value. Variation may occur according to conditions such as pressing speed.

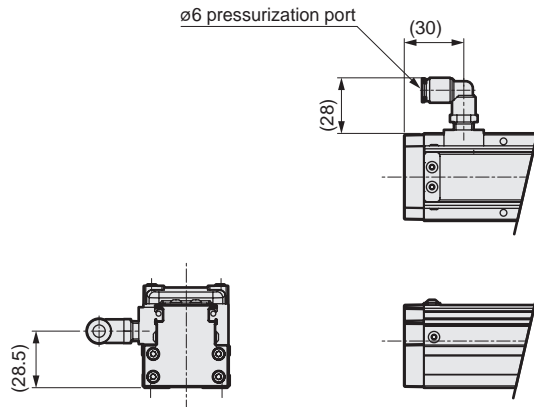
### Dimensions

Refer to pages 32 to 34 for actuator dimensions.

Refer to page 52 for fitting dimensions.

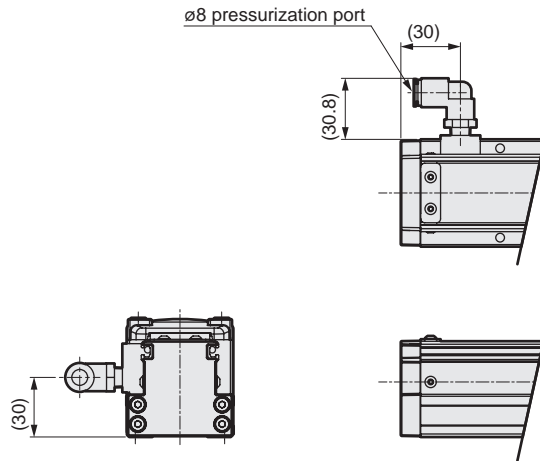
## Dimensions

### ● EJSG-04-V-G (fitting)



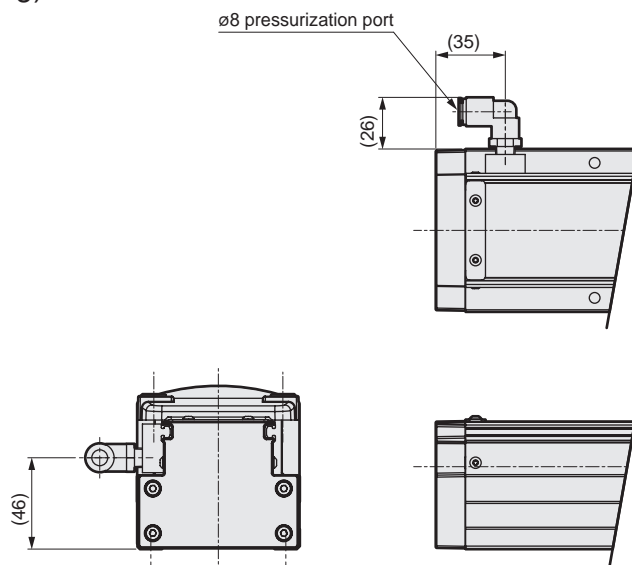
\* Refer to pages 8, 12 to 14 for actuator dimensions.

### ● EJSG-05-V-G (fitting)



\* Refer to pages 18, 22 to 24 for actuator dimensions.

### ● EJSG-08-V-G (fitting)



\* Refer to pages 28, 32 to 34 for actuator dimensions.



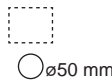
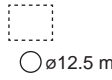
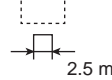
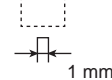
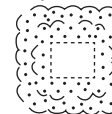
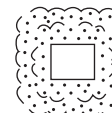
## Degree of protection

- Degree of protection
- IEC (International Electrotechnical Commission) standards (IEC60529)
- JIS C 0920 : 2003

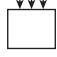
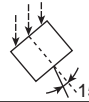
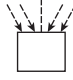
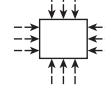
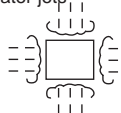
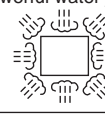
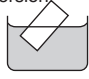

IP -

Protection characteristic codes (International Protection)

1st characteristic No. (degree of protection for foreign solid matter)

1st characteristic No.	Degree of protection	
0	No protection	
1		Protection against inflow of solids 50 mm and over in diameter
2		Protection against inflow of solids 12.5 mm and over in diameter
3		Protection against inflow of solids 2.5 mm and over in diameter
4		Protection against inflow of solids 1.0 mm and over in diameter
5	Dust-proof 	No inflow of dust at levels adversely affecting normal device operation or safety
6	Dust resistant 	No inflow of dust

2nd characteristic No. (degree of protection for water entry)

2nd characteristic No.	Degree of protection	
0	No protection	
1	Protection against water dripping 	No harmful effects from water dripping vertically.
2	Protection against dripping water tilted at an angle of up to 15° 	Water dripping vertically has no adverse effect when the product is tilted at an angle of up to 15° from its normal position.
3	Protection for watering 	Water sprayed at up to 60° from the vertical has no adverse effect.
4	Protection against splashing water 	Water splashing against the product from any direction has no adverse effect.
5	Protection against water jets 	No harmful effects occur even when water is sprayed with nozzles from all directions.
6	Protection against powerful water jets 	Water projected in powerful jets against the product from any direction has no adverse effect.
7	Protection against immersion 	Water will not enter the product even when it is immersed in water under defined conditions.
8	Protection against immersion 	The product can be used for continuous immersion in water.

EJSG

EJSG-G

EJSG-C

EJSG-P4

EJSG-FP1

Model selection  
Technical data

ECG-A

Safety  
precautions

Safety precautions	ECG-A	Model selection Technical data	EJSG-FP1	EJSG-P4	EJSG-C	EJSG-G	EJSG
--------------------	-------	-----------------------------------	----------	---------	--------	--------	------

# EJSG-C

Slider low dust specification



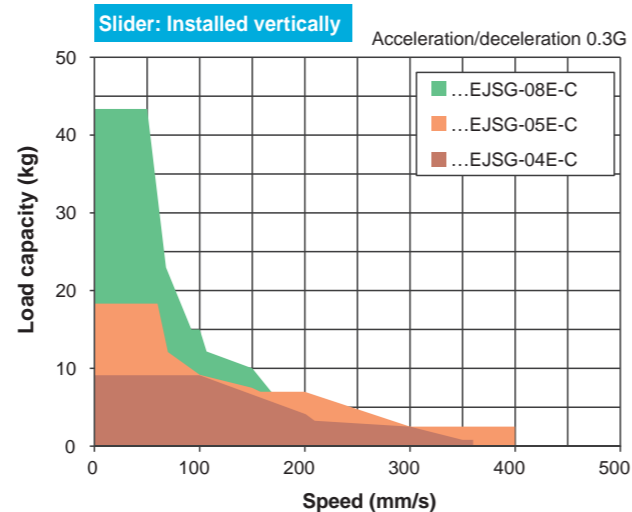
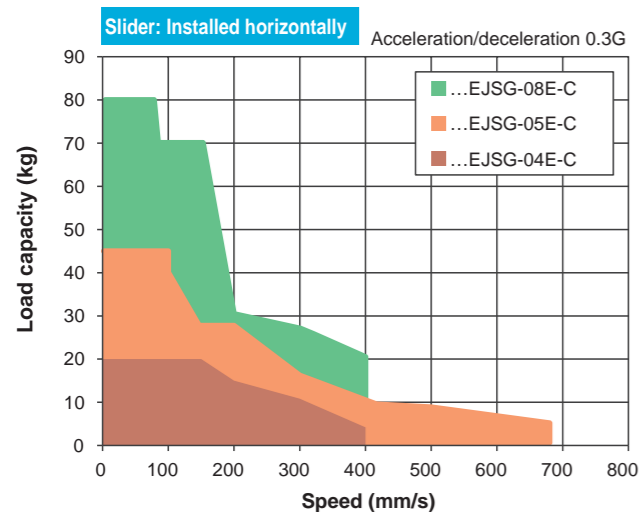
## CONTENTS

Product introduction	Intro
Series variation	56
<hr/>	
● Specifications/How to order/Dimensions	
• EJSG-04*-C	58
• EJSG-05*-C	62
• EJSG-08*-C	66
● Model selection	108
● Technical data	110
<hr/>	
⚠ Safety precautions	132
Model Selection Check Sheet	140

Series variation

Controller	Actuator Model No.	Motor Size	Motor Mounting Direction	Body width (mm)	Screw lead (mm)	Max. load capacity (kg)		Max. Pressing force (N)	Stroke (mm) and max. speed (mm/s)														Listed page								
						Horizontal	Vertical		50 mm	100	150	200	250	300	350	400	450	500	550	600	650	700		750	800	850	900	950	1000	1050	1100
EJSG EJSG-G EJSG-C EJSG-P4 EJSG-FP1 ECG Series	EJSG-04E06-C	□ 35	Straight	44	6	20.0	9.2	155	260 mm/s														58								
	EJSG-04E12-C				12	15.0	3.3	77	400																						
	EJSG-04R/D/L06-C		Left/Right/Bottom		6	20.0	9.2	155	200														60								
	EJSG-04R/D/L12-C				12	11.7	3.3	77	320																						
	EJSG-05E05-C	□ 42	Straight	54	5	40.0	14.0	220	230														62								
	EJSG-05E10-C				10	27.5	7.0	110	400																						
	EJSG-05E20-C				20	18.3	2.5	55	680																						
	EJSG-05R/D/L05-C		Left/Right/Bottom		5	40.0	10.0	220	200														64								
EJSG-05R/D/L10-C	10				27.5	3.3	110	320																							
EJSG-05R/D/L20-C	20				18.3	0.8	55	560																							
EJSG-08E05-C	□ 56	Straight	82	5	80.0	43.3	965	120														66									
EJSG-08E10-C				10	70.0	28.3	482	200																							
EJSG-08E20-C				20	30.0	3.3	241	400																							
EJSG-08R/D/L05-C		Left/Right/Bottom		5	80.0	33.3	965	100														68									
EJSG-08R/D/L10-C				10	70.0	18.3	482	200																							
EJSG-08R/D/L20-C				20	30.0	3.3	241	320																							

\* This data is obtained at an acceleration/deceleration of 0.3G.  
 \* The load capacity when wall mounted is the same as for horizontal installation.





Electric actuator Slider Low dust specification

# EJSG-04E-C

Straight motor mounting

35 Stepping motor



## How to order

**EJSG - 04 E 06 0300 N B N - V C S03 - C**

<b>1</b> Body size	<b>4</b> Stroke	<b>6</b> Encoder *1	<b>8</b> Relay cable *3
04 Body width 44mm	0050 to 0800 50 mm (In 50 mm increments) 800 mm	B Battery-less absolute encoder C Incremental encoder	N00 None S01 Fixed cable 1 m S03 Fixed cable 3 m S05 Fixed cable 5 m S10 Fixed cable 10 m R01 Movable cable 1 m R03 Movable cable 3 m R05 Movable cable 5 m R10 Movable cable 10 m
<b>2</b> Motor mounting direction	<b>3</b> Screw lead	<b>5</b> Brake *2	<b>7</b> Fitting
E Straight mounting	06 6 mm 12 12 mm	N None B Yes	V Yes

\*1 Select the controller from page 117.

\*2 When using vertically, select "Yes".

\*3 Refer to page 128 for relay cable dimensions.

## Specifications

Supported controllers	ECG-A	
Motor	<input type="checkbox"/> 35 Stepping motor	
Encoder type	Battery-less absolute encoder Incremental encoder	
Drive method	Ball screw ø10	
Stroke mm	50 to 800	
Screw lead mm	6	12
Max. workload kg *1	Horizontal 20.0	Vertical 15.0
	Horizontal 9.2	Vertical 3.3
Operation speed range *2mm/s	7 to 260	15 to 400
Max. acceleration/ deceleration G	Horizontal 0.7	Vertical 0.7
	Horizontal 0.3	Vertical 0.3
Maximum pushing force N	155	77
Pressing operation speed rangemm/s	5 to 20	5 to 20
Repeatability mm	±0.01	
Lost motion mm	0.1 or less	
Static allowable moment N·m	MP:62 MY:62 MR:92	
Motor power supply voltage	24 VDC ±10%	
Motor section max. instantaneous currentA	2.4	
Brake	Model, power supply voltage	Non-excitation operation, 24 VDC ±10%
	Power consumptionW	6.1
	Holding force N	140 70
Insulation resistance	10 MΩ, 500 VDC	
Withstand voltage	500 VAC for 1 minute	
Operating ambient temperature, humidity	10 to 40 °C (no freezing) 35 to 80% RH (no condensation)	
Storage ambient temperature, humidity	-10 to 50°C (no freezing) 35 to 80% RH (no condensation)	
Atmosphere	No corrosive gas, explosive gas, or dust	

\*1 Load capacity varies according to acceleration/deceleration and speed. Refer to page 59 for details.

\*2 The maximum speed may decrease depending on the conditions.

EJSG

EJSG-G

EJSG-C

EJSG-P4

EJSG-FP1

Model selection  
Technical data

ECG-A

Safety  
precautions

## Stroke and max. speed

Screw lead	Stroke (mm/s)				
	50 to 600	650	700	750	800
6	260	250	220	190	170
12	400	400	400	390	340

## Speed and load capacity

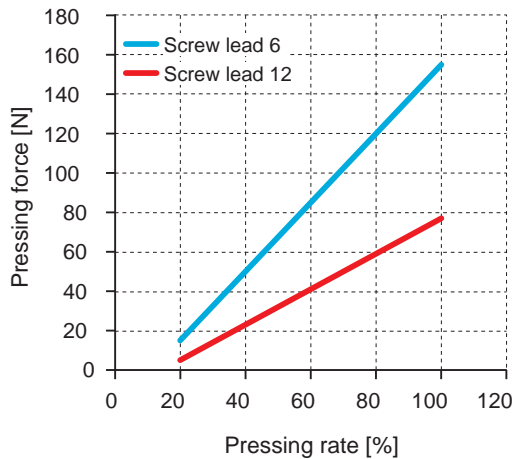
[When installed horizontally]

Speed (mm/s)	Acceleration/deceleration (G)			
	0.3		0.7	
	Screw lead (mm)			
	6	12	6	12
7	20.0		20.0	
15	20.0	15.0	20.0	11.0
50	20.0	15.0	20.0	11.0
100	20.0	15.0	20.0	11.0
150	20.0	15.0	12.5	10.8
200	15.0	15.0	12.5	10.8
250	11.7	10.8	11.7	8.3
260	10.9	10.8	10.9	8.3
300		10.8		8.3
320		9.5		7.5
400		4.2		4.2

[When installed vertically]

Speed (mm/s)	Acceleration/deceleration (G)	
	0.3	
	Screw lead (mm)	
	6	12
7	9.2	
15	9.2	3.3
50	9.2	3.3
100	9.2	3.3
150	6.7	3.3
180	5.2	3.3
200	4.2	3.3
220	2.2	2.7
280		2.7
300		2.5
350		0.8
360		0.8

## Pressing force

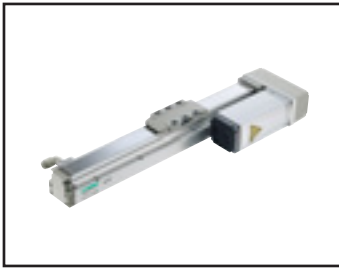


\*The above pressing force is a reference value. Variation may occur according to conditions such as pressing speed.

## Dimensions

Refer to page 8 for actuator dimensions.

Refer to page 70 for fitting dimensions.



Electric actuator Slider Low dust specification

# EJSG-04\*-C

Motor side mounting (left, right, bottom)



## How to order

**EJSG - 04 R 06 0300 N B N - V C S03 - C**

<b>1</b> Body size	<b>4</b> Stroke *2*3	<b>6</b> Encoder	<b>8</b> Relay cable *5
<b>04</b> Body width 44mm	<b>0050 to 0800</b> 50 mm (In 50 mm increments) 800 mm	<b>B</b> Battery-less absolute encoder <b>C</b> Incremental encoder	<b>N00</b> None <b>S01</b> Fixed cable 1 m <b>S03</b> Fixed cable 3 m <b>S05</b> Fixed cable 5 m <b>S10</b> Fixed cable 10 m <b>R01</b> Movable cable 1 m <b>R03</b> Movable cable 3 m <b>R05</b> Movable cable 5 m <b>R10</b> Movable cable 10 m
<b>2</b> Motor mounting direction *2*3	<b>3</b> Screw lead	<b>5</b> Brake *4	<b>7</b> Fitting *3
<b>R</b> Right mounting <b>D</b> Bottom mounting <b>L</b> Left mounting	<b>06</b> 6 mm <b>12</b> 12 mm	<b>N</b> None <b>B</b> Yes	<b>V</b> Yes

\*1 Select the controller from page 117.  
 \*2 When selecting the motor mounting direction "D", the stroke is "0250 (250 mm)" to "0800(800mm)" is the selection.  
 \*3 For the motor mounting direction "L", 0050 (50 mm) stroke cannot be selected.  
 \*4 When using vertically, select "Yes".  
 \*5 Refer to page 128 for relay cable dimensions.

## Specifications

Supported controllers	ECG-A	
Motor	□35 stepper motor	
Encoder type	Battery-less absolute encoder Incremental encoder	
Drive method	Ball screw ø10	
Stroke mm	50 to 800	
Screw lead mm	6	12
Max. workload kg *1	Horizontal 20.0 Vertical 9.2	11.7 3.3
Operation speed range *2mm/s	7 to 200	15 to 320
Max. acceleration/ deceleration G	Horizontal 0.7 Vertical 0.3	0.7 0.3
Maximum pushing force N	155	77
Pressing operation speed rangemm/s	5 to 20	5 to 20
Repeatability mm	±0.01	
Lost motion mm	0.1 or less	
Static allowable moment N·m	MP:62 MY:62 MR:92	
Motor power supply voltage	24 VDC ±10%	
Motor section max. instantaneous current A	2.4	
Brake	Model, power supply voltage	Non-excitation operation, 24 VDC ±10%
	Power consumption W	6.1
	Holding force N	140 70
Insulation resistance	10 MΩ, 500 VDC	
Withstand voltage	500 VAC for 1 minute	
Operating ambient temperature, humidity	10 to 40 °C (no freezing) 35 to 80% RH (no condensation)	
Storage ambient temperature, humidity	-10 to 50°C (no freezing) 35 to 80% RH (no condensation)	
Atmosphere	No corrosive gas, explosive gas, or dust	

\*1 Load capacity varies according to acceleration/deceleration and speed. Refer to page 61 for details.  
 \*2 The maximum speed may decrease depending on the conditions.

### Stroke and max. speed

Screw lead	Stroke (mm/s)		
	50 to 700	750	800
6	200	190	170
12	320	320	320

### Speed and load capacity

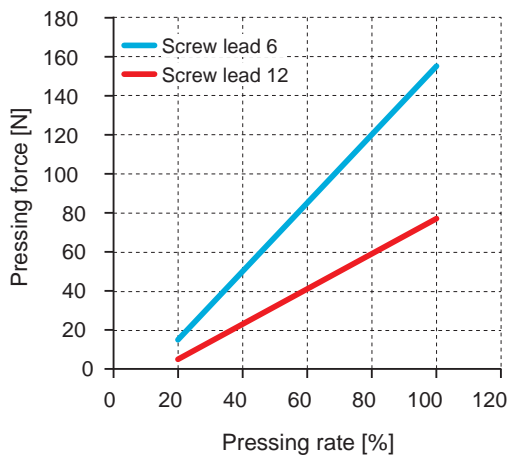
[When installed horizontally]

Speed (mm/s)	Acceleration/deceleration (G)			
	0.3		0.7	
	Screw lead (mm)			
	6	12	6	12
7	20.0		20.0	
15	20.0	11.7	20.0	10.0
50	20.0	11.7	20.0	10.0
100	20.0	11.7	20.0	10.0
150	13.3	11.7	11.7	10.0
200	13.3	11.7	10.0	10.0
300		8.3		8.3
320		7.3		7.3

[When installed vertically]

Speed (mm/s)	Acceleration/deceleration (G)	
	0.3	
	Screw lead (mm)	
	6	12
7	9.2	
15	9.2	3.3
50	9.2	3.3
100	6.7	3.3
150	3.3	3.3
180	2.8	3.3
200		3.3
280		2.0

### Pressing force

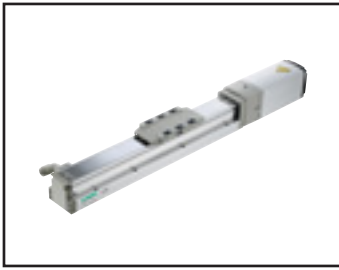


\*The above pressing force is a reference value. Variation may occur according to conditions such as pressing speed.

### Dimensions

Refer to pages 12 to 14 for actuator dimensions.

Refer to page 70 for fitting dimensions.



Electric actuator Slider Low dust specification

# EJSG-05E-C

Straight motor mounting

42 Stepper motor



## How to order

**EJSG - 05 E 05 0300 N B N - V C S03 - C**

**1 Body size**

<b>05</b>	Body width 54mm
-----------	-----------------

**2 Motor mounting direction**

<b>E</b>	Straight mounting
----------	-------------------

**4 Stroke**

<b>0050 to 0800</b>	50 mm (In 50 mm increments) 800 mm
---------------------	---------------------------------------

**6 Encoder**

<b>B</b>	Battery-less absolute encoder
<b>C</b>	Incremental encoder

**3 Screw lead**

<b>05</b>	5 mm
<b>10</b>	10 mm
<b>20</b>	20 mm

**5 Brake \*2**

<b>N</b>	None
<b>B</b>	Yes

**7 Fitting**

<b>V</b>	Yes
----------	-----

**8 Relay cable \*3**

<b>N00</b>	None
<b>S01</b>	Fixed cable 1 m
<b>S03</b>	Fixed cable 3 m
<b>S05</b>	Fixed cable 5 m
<b>S10</b>	Fixed cable 10 m
<b>R01</b>	Movable cable 1 m
<b>R03</b>	Movable cable 3 m
<b>R05</b>	Movable cable 5 m
<b>R10</b>	Movable cable 10 m

\*1 Select the controller from page 117.

\*2 When using vertically, select "Yes".

\*3 Refer to page 128 for relay cable dimensions.

## Specifications

Supported controllers	ECG-A			
Motor	<input type="checkbox"/> 42 Stepper motor			
Encoder type	Battery-less absolute encoder Incremental encoder			
Drive method	Ball screw ø12			
Stroke mm	50 to 800			
Screw lead mm	5	10	20	
Max. workload kg *1	Horizontal	40.0	27.5	18.3
	Vertical	14.0	7.0	2.5
Operation speed range *2mm/s	6 to 230	12 to 400	25 to 680	
Maximum acceleration/ deceleration G	Horizontal	0.7	0.7	0.7
	Vertical	0.3	0.3	0.3
Maximum pushing force N	220	110	55	
Pressing operation speed rangemm/s	5 to 20	5 to 20	5 to 20	
Repeatability mm	±0.01			
Lost motion mm	0.1 or less			
Static allowable moment N·m	MP:103 MY:103 MR:144			
Motor power supply voltage	24 VDC ±10%			
Motor section max. instantaneous currentA	2.7			
Brake	Model, power supply voltage	Non-excitation operation, 24 VDC ±10%		
	Power consumptionW	6.1		
	Holding force N	168	84	42
Insulation resistance	10 MΩ, 500 VDC			
Withstand voltage	500 VAC for 1 minute			
Operating ambient temperature	10 to 40 °C (no freezing)			
Storage ambient temperature	-10 to 50°C (no freezing)			
Atmosphere	No corrosive gas, explosive gas, or dust			

\*1 Load capacity varies according to acceleration/deceleration and speed. Refer to page 63 for details.

\*2 The maximum speed may decrease depending on the conditions.

### Stroke and max. speed

Screw lead	Stroke (mm/s)				
	50 to 600	650	700	750	800
5	230	225	200	175	150
10	400	400	400	355	315
20	680	680	680	680	630

### Speed and load capacity

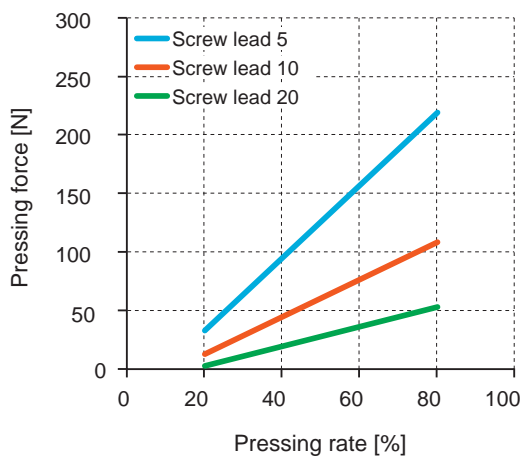
[When installed horizontally]

Speed (mm/s)	Acceleration/deceleration (G)					
	0.3			0.7		
	Screw lead (mm)					
	5	10	20	5	10	20
6	40.0			40.0		
12	40.0	27.5		40.0	27.5	
25	40.0	27.5	18.3	40.0	27.5	8.3
50	40.0	27.5	18.3	40.0	27.5	8.3
100	40.0	27.5	18.3	40.0	27.5	8.3
150	26.7	27.5	10.0	26.7	27.5	6.7
200	26.7	27.5	10.0	26.7	27.5	6.7
230	26.7	15.8	10.0	26.7	12.5	6.7
300		15.8	10.0		12.5	6.7
320		14.6	8.3		11.8	5.0
400		10.0	8.3		9.2	5.0
500			8.3			5.0
560			7.1			4.3
680			4.6			2.8

[When installed vertically]

Speed (mm/s)	Acceleration/deceleration (G)		
	0.3		
	Screw lead (mm)		
	5	10	20
6	14.0		
12	14.0	7.0	
25	14.0	7.0	2.5
50	14.0	7.0	2.5
100	9.2	7.0	2.5
150	7.5	7.0	2.5
170	6.2	7.0	2.5
200	4.2	7.0	2.5
260		4.3	2.5
300		2.5	2.5
325		2.1	2.5
340		2.1	2.5
400			2.5

### Pressing force

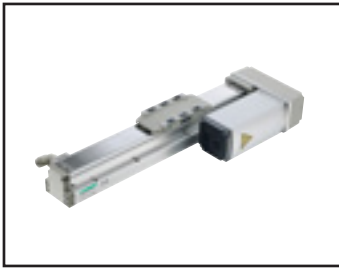


\*The above pressing force is a reference value. Variation may occur according to conditions such as pressing speed.

### Dimensions

Refer to page 18 for actuator dimensions.

Refer to page 70 for fitting dimensions.



Electric actuator Slider Low dust specification

# EJSG-05\*-C

Motor side mounting (left, right, bottom)

42 Stepper motor



## How to order

**EJSG - 05 R 05 0300 N B N - V C S03 - C**

**1 Body size**

05	Body width 54mm
----	-----------------

**2 Motor mounting direction \*2\*3**

R	Right mounting
D	Bottom mounting
L	Left mounting

**4 Stroke \*2\*3**

0050 to 0800	50 mm (In 50 mm increments) to 800 mm
--------------	---------------------------------------

**3 Screw lead**

05	5 mm
10	10 mm
20	20 mm

**6 Encoder**

B	Battery-less absolute encoder
C	Incremental encoder

**5 Brake \*4**

N	None
B	Yes

**7 Fitting \*3**

V	Yes
---	-----

**8 Relay cable \*5**

N00	None
S01	Fixed cable 1 m
S03	Fixed cable 3 m
S05	Fixed cable 5 m
S10	Fixed cable 10 m
R01	Movable cable 1 m
R03	Movable cable 3 m
R05	Movable cable 5 m
R10	Movable cable 10 m

\*1 Select the controller from page 117.

\*2 When the motor mounting direction "D" is selected, the stroke is selected from "0250 (250 mm)" to "0800 (800 mm)".

\*3 For the motor mounting direction "L", 0050 (50 mm) stroke cannot be selected.

\*4 When using vertically, select "Yes".

\*5 Refer to page 128 for relay cable dimensions.

Supported controllers	ECG-A			
Motor	<input type="checkbox"/> 42 Stepper motor			
Encoder type	Battery-less absolute encoder Incremental encoder			
Drive method	Ball screw $\phi$ 12			
Stroke mm	50 to 800			
Screw lead mm	5	10	20	
Max. workload kg *1	Horizontal	40.0	27.5	18.3
	Vertical	10.0	3.3	0.8
Operation speed range *2mm/s	6 to 200	12 to 320	25 to 560	
Maximum acceleration/ deceleration G	Horizontal	0.7	0.7	0.7
	Vertical	0.3	0.3	0.3
Maximum pushing force N	220	110	55	
Pressing operation speed rangemm/s	5 to 20	5 to 20	5 to 20	
Repeatability mm	$\pm$ 0.01			
Lost motion mm	0.1 or less			
Static allowable moment N·m	MP:103 MY:103 MR:144			
Motor power supply voltage	24 VDC $\pm$ 10%			
Motor section max. instantaneous currentA	2.7			
Brake	Model, power supply voltage	Non-excitation operation, 24 VDC $\pm$ 10%		
	Power consumption W	6.1		
	Holding force N	168	84	42
Insulation resistance	10 M $\Omega$ , 500 VDC			
Withstand voltage	500 VAC for 1 minute			
Operating ambient temperature, humidity	10 to 40 °C (no freezing) 35 to 80% RH (no condensation)			
	-10 to 50°C (no freezing) 35 to 80% RH (no condensation)			
Storage ambient temperature, humidity	-10 to 50°C (no freezing) 35 to 80% RH (no condensation)			
Atmosphere	No corrosive gas, explosive gas, or dust			

\*1 Load capacity varies according to acceleration/deceleration and speed. Refer to page 65 for details.

\*2 The maximum speed may decrease depending on the conditions.

### Stroke and max. speed

Screw lead	Stroke (mm/s)		
	50 to 700	750	800
5	200	175	150
10	320	320	315
20	560	560	560

### Speed and load capacity

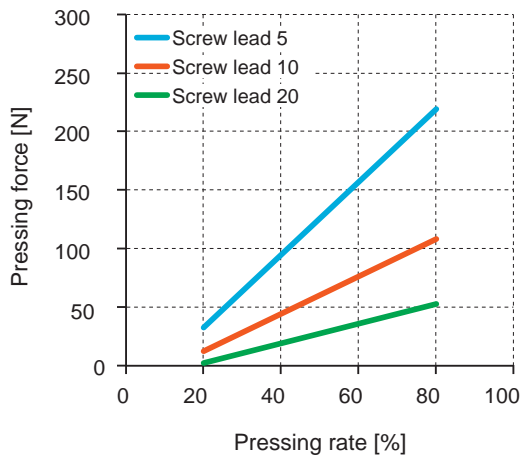
[When installed horizontally]

Speed (mm/s)	Acceleration/deceleration (G)					
	0.3			0.7		
	Screw lead (mm)					
	5	10	20	5	10	20
6						
12						
25						
50						
100						
150						
200						
300						
320						
500						
560						

[When installed vertically]

Speed (mm/s)	Acceleration/deceleration (G)		
	0.3		
	Screw lead (mm)		
	5	10	20
6	10.0		
12	10.0	3.3	
25	10.0	3.3	0.8
50	10.0	3.3	0.8
100	8.3	3.3	0.8
150	6.7	2.1	0.8
170	5.0	2.1	0.8
200		2.1	0.8
260		1.6	0.8
400			0.8

### Pressing force

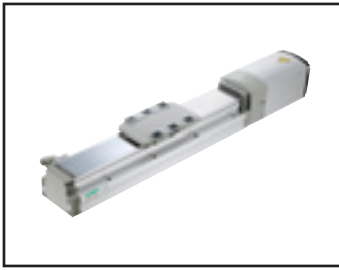


\*The above pressing force is a reference value. Variation may occur according to conditions such as pressing speed.

### Dimensions

Refer to pages 22 to 24 for actuator dimensions.

Refer to page 70 for fitting dimensions.



Electric actuator Slider Low dust specification

# EJSG-08E-C

Straight motor mounting

56 Stepping motor



## How to order

**EJSG - 08 E 05 0300 N B N - V C S03 - C**

<b>1</b> Body size	<b>08</b> Body width 82mm																		
<b>2</b> Motor mounting direction	<b>E</b> Straight mounting																		
<b>3</b> Screw lead	<table border="1"> <tr><td><b>05</b></td><td>5 mm</td></tr> <tr><td><b>10</b></td><td>10 mm</td></tr> <tr><td><b>20</b></td><td>20 mm</td></tr> </table>	<b>05</b>	5 mm	<b>10</b>	10 mm	<b>20</b>	20 mm												
<b>05</b>	5 mm																		
<b>10</b>	10 mm																		
<b>20</b>	20 mm																		
<b>4</b> Stroke	<table border="1"> <tr><td><b>0050 to 1100</b></td><td>50 mm (In 50 mm increments) 1100 mm</td></tr> </table>	<b>0050 to 1100</b>	50 mm (In 50 mm increments) 1100 mm																
<b>0050 to 1100</b>	50 mm (In 50 mm increments) 1100 mm																		
<b>5</b> Brake <sup>*2</sup>	<table border="1"> <tr><td><b>N</b></td><td>None</td></tr> <tr><td><b>B</b></td><td>Yes</td></tr> </table>	<b>N</b>	None	<b>B</b>	Yes														
<b>N</b>	None																		
<b>B</b>	Yes																		
<b>6</b> Encoder	<table border="1"> <tr><td><b>B</b></td><td>Battery-less absolute encoder</td></tr> <tr><td><b>C</b></td><td>Incremental encoder</td></tr> </table>	<b>B</b>	Battery-less absolute encoder	<b>C</b>	Incremental encoder														
<b>B</b>	Battery-less absolute encoder																		
<b>C</b>	Incremental encoder																		
<b>7</b> Fitting	<table border="1"> <tr><td><b>V</b></td><td>Yes</td></tr> </table>	<b>V</b>	Yes																
<b>V</b>	Yes																		
<b>8</b> Relay cable <sup>*3</sup>	<table border="1"> <tr><td><b>N00</b></td><td>None</td></tr> <tr><td><b>S01</b></td><td>Fixed cable 1 m</td></tr> <tr><td><b>S03</b></td><td>Fixed cable 3 m</td></tr> <tr><td><b>S05</b></td><td>Fixed cable 5 m</td></tr> <tr><td><b>S10</b></td><td>Fixed cable 10 m</td></tr> <tr><td><b>R01</b></td><td>Movable cable 1 m</td></tr> <tr><td><b>R03</b></td><td>Movable cable 3 m</td></tr> <tr><td><b>R05</b></td><td>Movable cable 5 m</td></tr> <tr><td><b>R10</b></td><td>Movable cable 10 m</td></tr> </table>	<b>N00</b>	None	<b>S01</b>	Fixed cable 1 m	<b>S03</b>	Fixed cable 3 m	<b>S05</b>	Fixed cable 5 m	<b>S10</b>	Fixed cable 10 m	<b>R01</b>	Movable cable 1 m	<b>R03</b>	Movable cable 3 m	<b>R05</b>	Movable cable 5 m	<b>R10</b>	Movable cable 10 m
<b>N00</b>	None																		
<b>S01</b>	Fixed cable 1 m																		
<b>S03</b>	Fixed cable 3 m																		
<b>S05</b>	Fixed cable 5 m																		
<b>S10</b>	Fixed cable 10 m																		
<b>R01</b>	Movable cable 1 m																		
<b>R03</b>	Movable cable 3 m																		
<b>R05</b>	Movable cable 5 m																		
<b>R10</b>	Movable cable 10 m																		

\*1 Select the controller from page 117.

\*2 When using vertically, select "Yes".

\*3 Refer to page 128 for relay cable dimensions.

## Specifications

Supported controllers	ECG-A			
Motor	<input type="checkbox"/> 56 Stepping motor			
Encoder type	Battery-less absolute encoder Incremental encoder			
Drive method	Ball screw ø15			
Stroke mm	50 to 1100			
Screw lead mm	5	10	20	
Max. workload kg <sup>*1</sup>	Horizontal	80.0	70.0	30.0
	Vertical	43.3	28.3	3.3
Operation speed range <sup>*2</sup> mm/s	6 to 120	12 to 200	25 to 400	
Max. acceleration/ deceleration G	Horizontal	0.7	0.7	0.7
	Vertical	0.3	0.3	0.3
Maximum pushing force N	965	482	241	
Pressing operation speed range mm/s	5 to 20	5 to 20	5 to 20	
Repeatability mm	±0.01			
Lost motion mm	0.1 or less			
Static allowable moment N·m	MP:203 MY:203 MR:336			
Motor power supply voltage	24 VDC ±10%			
Motor section max. instantaneous current A	4.0			
Brake	Model, power supply voltage	Non-excitation operation, 24 VDC ±10%		
	Power consumption W	7.2		
	Holding force N	768	384	192
Insulation resistance	10 MΩ, 500 VDC			
Withstand voltage	500 VAC for 1 minute			
Operating ambient temperature	10 to 40 °C (no freezing) 35 to 80% RH (no condensation)			
Storage ambient temperature	-10 to 50°C (no freezing) 35 to 80% RH (no condensation)			
Atmosphere	No corrosive gas, explosive gas, or dust			

\*1 Load capacity varies according to acceleration/deceleration and speed. Refer to page 67 for details.

\*2 The maximum speed may decrease depending on the conditions.

### Stroke and max. speed

Screw lead	Stroke (mm/s)	
	50 to 1050	1100
5	120	110
10	200	200
20	400	400

### Speed and load capacity

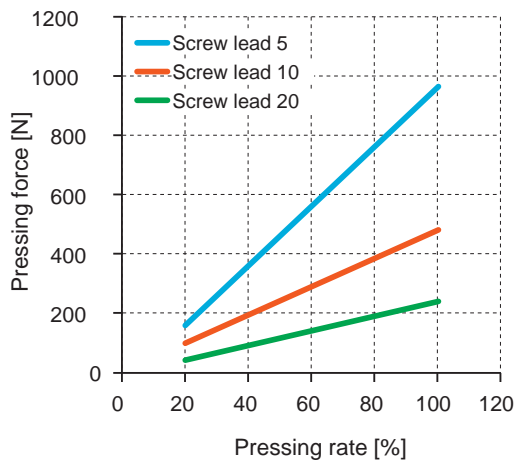
[When installed horizontally]

Speed (mm/s)	Acceleration/deceleration (G)					
	0.3			0.7		
	Screw lead (mm)					
	5	10	20	5	10	20
6	80.0			80.0		
12	80.0	70.0		80.0	70.0	
25	80.0	70.0	30.0	80.0	70.0	26.7
50	80.0	70.0	30.0	80.0	70.0	26.7
75	80.0	70.0	30.0	80.0	70.0	26.7
100	40.0	70.0	30.0	40.0	70.0	26.7
120	40.0	70.0	30.0	40.0	70.0	18.3
150		70.0	30.0		70.0	18.3
200		28.3	30.0		17.5	18.3
300			26.7			18.3
320			25.4			17.0
400			20.0			

[When installed vertically]

Speed (mm/s)	Acceleration/deceleration (G)		
	0.3		
	Screw lead (mm)		
	5	10	20
6	43.3		
12	43.3	28.3	
25	43.3	28.3	3.3
50	43.3	28.3	3.3
75	15.0	12.5	3.3
100	15.0	12.5	3.3
120	5.3	10.0	3.3
150		10.0	3.3
160		8.3	3.3
200		1.7	3.3
280			3.3

### Pressing force

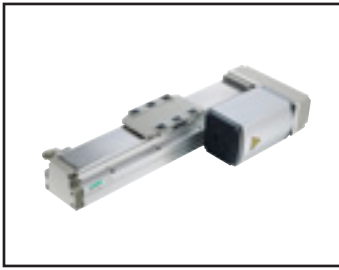


\*The above pressing force is a reference value. Variation may occur according to conditions such as pressing speed.

### Dimensions

Refer to page 28 for actuator dimensions.

Refer to page 70 for fitting dimensions.



Electric actuator Slider Low dust specification

# EJSG-08\*-C

Motor side mounting (left, right, bottom)

56 Stepping motor



## How to order

**EJSG - 08 R 05 0300 N B N - V C S03 - C**

1 Body size  
08 Body width 82mm

2 Motor mounting direction\*2  
R Right mounting  
D Bottom mounting  
L Left mounting

3 Screw lead  
05 5 mm  
10 10 mm  
20 20 mm

4 Stroke \*2  
0050 to 1100  
50 mm (In 50 mm increments)  
1100 mm

5 Brake \*3  
N None  
B Yes

6 Encoder  
B Battery-less absolute encoder  
C Incremental encoder

7 Fitting  
V Yes

8 Relay cable \*4

N00	None
S01	Fixed cable 1 m
S03	Fixed cable 3 m
S05	Fixed cable 5 m
S10	Fixed cable 10 m
R01	Movable cable 1 m
R03	Movable cable 3 m
R05	Movable cable 5 m
R10	Movable cable 10 m

\*1 Select the controller from page 117.

\*2 When the motor mounting direction "D" is selected, the stroke is selected from "0250 (250 mm)" to "1100 (1100 mm)".

\*3 When using vertically, select "Yes".

\*4 Refer to page 128 for relay cable dimensions.

## Specifications

Supported controllers	ECG-A			
Motor	<input type="checkbox"/> 56 Stepping motor			
Encoder type	Battery-less absolute encoder Incremental encoder			
Drive method	Ball screw ø15			
Stroke mm	50 to 1100			
Screw lead mm	5	10	20	
Max. workload kg	Horizontal	80.0	70.0	30.0
	Vertical	33.3	18.3	3.3
Operation speed range mm/s		6 to 100	12 to 200	25 to 320
Max. acceleration/ deceleration G	Horizontal	0.7	0.7	0.7
	Vertical	0.3	0.3	0.3
Maximum pushing force N		965	482	241
Pressing operation speed range mm/s		5 to 20	5 to 20	5 to 20
Repeatability mm	±0.01			
Lost motion mm	0.1 or less			
Static allowable moment N·m	MP:203 MY:203 MR:336			
Motor power supply voltage	24 VDC ±10%			
Motor section max. instantaneous current A	4.0			
Brake	Model, power supply voltage	Non-excitation operation, 24 VDC ±10%		
	Power consumption W	7.2		
	Holding force N	768	384	192
Insulation resistance	10 MΩ, 500 VDC			
Withstand voltage	500 VAC for 1 minute			
Operating ambient temperature, humidity	10 to 40 °C (no freezing) 35 to 80% RH (no condensation)			
Storage ambient temperature, humidity	-10 to 50°C (no freezing) 35 to 80% RH (no condensation)			
Atmosphere	No corrosive gas, explosive gas, or dust			

\*1 Load capacity varies according to acceleration/deceleration and speed. Refer to page 69 for details.

\*2 The maximum speed may decrease depending on the conditions.

EJSG

EJSG-G

EJSG-C

EJSG-P4

EJSG-FP1

Model selection  
Technical data

ECG-A

Safety  
precautions

### Stroke and max. speed

Screw lead	Stroke
	50 to 1100
5	100
10	200
20	320

(mm/s)

### Speed and load capacity

[When installed horizontally]

Speed (mm/s)	Acceleration/deceleration (G)					
	0.3			0.7		
	Screw lead (mm)					
	5	10	20	5	10	20
6	80.0			80.0		
12	80.0	70.0		80.0	70.0	
25	80.0	70.0	30.0	80.0	70.0	26.7
50	80.0	70.0	30.0	80.0	70.0	26.7
75	68.3	70.0	30.0	68.3	70.0	26.7
100	40.0	70.0	30.0	40.0	70.0	26.7
150		70.0	30.0		30.0	18.3
200		28.3	30.0		17.5	18.3
300			6.7			6.7
320			6.0			6.0

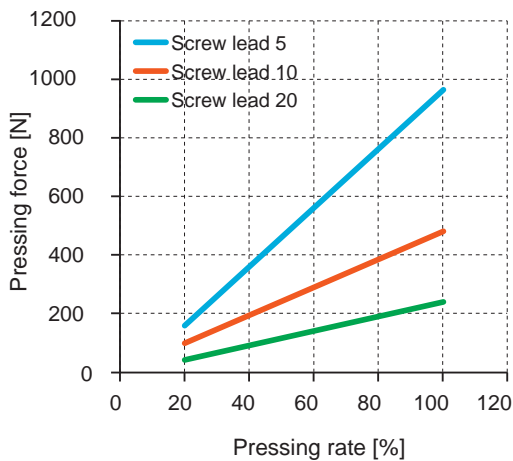
(kg)

[When installed vertically]

Speed (mm/s)	Acceleration/deceleration (G)		
	0.3		
	Screw lead (mm)		
	5	10	20
6	33.3		
12	33.3	18.3	
25	33.3	18.3	3.3
50	25.0	18.3	3.3
75	15.0	12.5	3.3
100	12.5	12.5	3.3
150		8.3	3.3
160		7.0	3.3
200			3.3
280			3.3

(kg)

### Pressing force



\*The above pressing force is a reference value. Variation may occur according to conditions such as pressing speed.

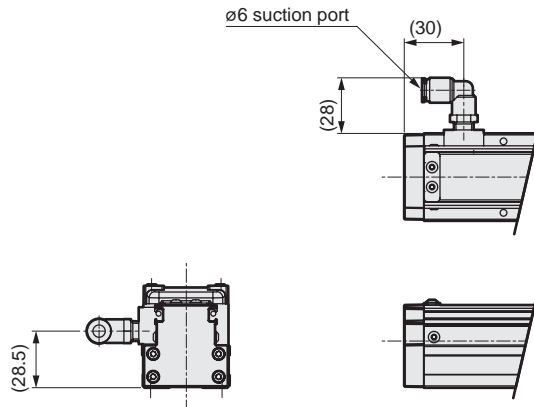
### Dimensions

Refer to pages 32 to 34 for actuator dimensions.

Refer to page 70 for fitting dimensions.

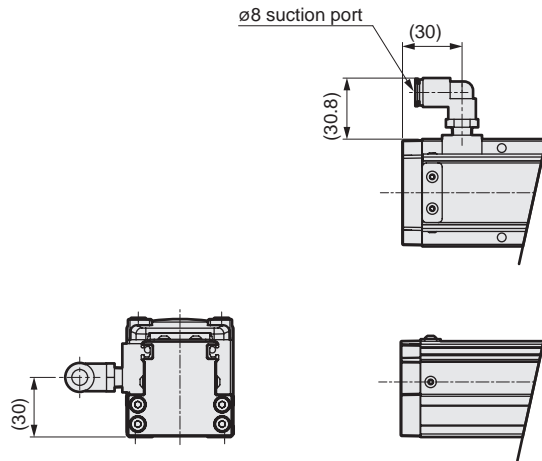
## Dimensions

### ● EJSG-04-V-C (fitting)



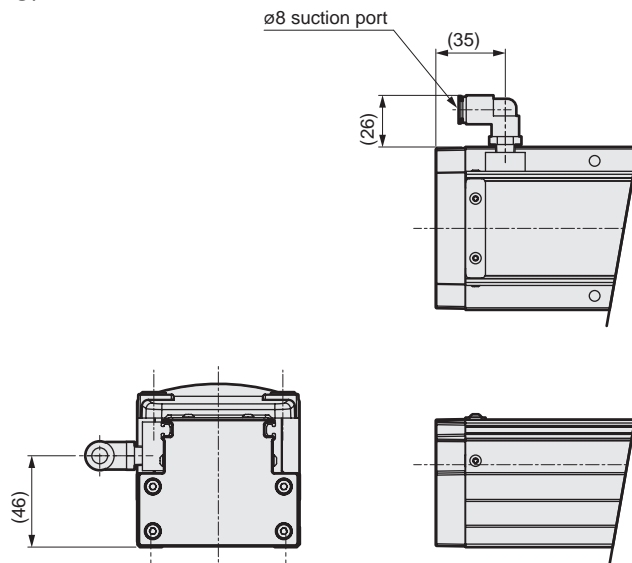
\* Refer to pages 8, 12 to 14 for actuator dimensions.

### ● EJSG-05-V-C (fitting)



\* Refer to pages 18, 22 to 24 for actuator dimensions.

### ● EJSG-08-V-C (fitting)



\* Refer to pages 28, 32 to 34 for actuator dimensions.

EJSG

EJSG-G

EJSG-C

EJSG-P4

EJSG-FP1

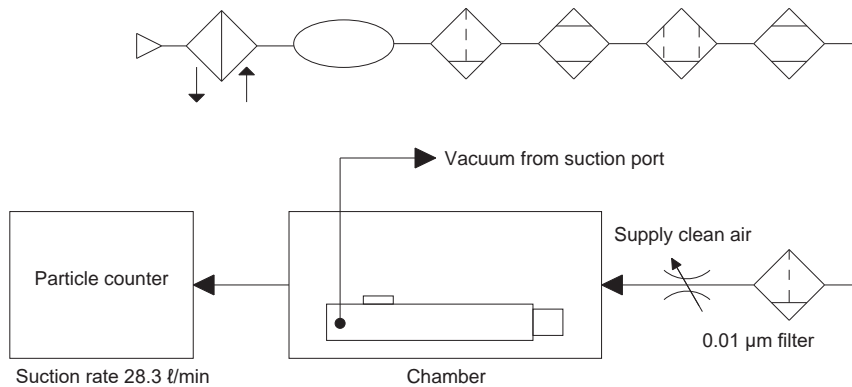
Model selection  
Technical data

ECG-A

Safety  
precautions

## Dust generation characteristics Reference data

### Test circuit



### Measuring conditions

Item		Description
Test sample	Model No.	EJSG-04E120500*-*-C
		EJSG-05E200500*-*-C
		EJSG-08E200600*-*-C
	Operating speed	100mm/sec
	Acceleration/deceleration time	0.3G
Suction flow rate		30.0l/min
Particle Counter	Name	Laser dust monitor
	Min. measurable particle diameter	0.1 µm
	Intake	28.3l/min
Measuring conditions	Measurement time	10min

### Measuring method

- (1) Set a test sample (EJSG-\*-C) in the chamber.
- (2) Test is started from the suction port of the vacuum sample. Clean air supplied in the same quantity as the particle counter suction rate (28.3l/min).
- (3) Confirm that the background measurement value is 0.
- (4) A test sample is operated to measure the change of particle concentration in a specified cycle.

## Dust generation data

● Operation speed: 100mm/sec

